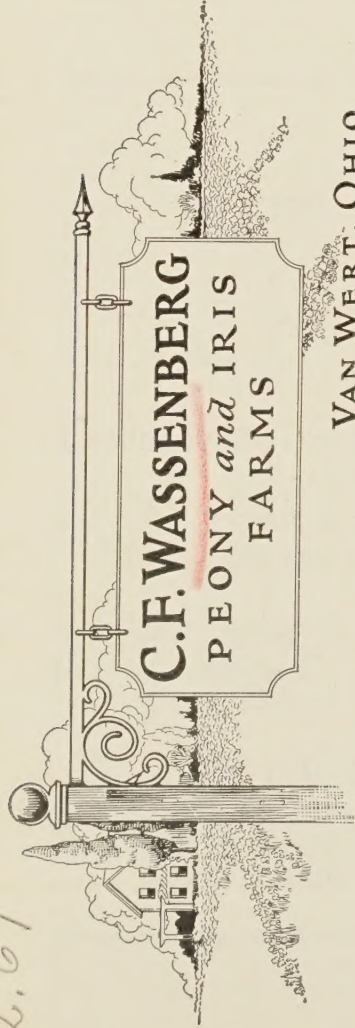


## **Historic, Archive Document**

Do not assume content reflects current scientific knowledge, policies, or practices.



62.67



**C.F. WASSENBERG**  
*PEONY and IRIS*  
**FARMS**

**VAN WERT, OHIO.**

*"The Peony City"*

4½ Miles East on U. S. 30

Sec. 34.66 P. L. & R.

U. S. POSTAGE

**P A I D**

VAN WERT, O.

Permit No. 8

**LIBRARY  
RECEIVED**

★ JUL 3 1 1951 ★

U. S. Department of Agriculture

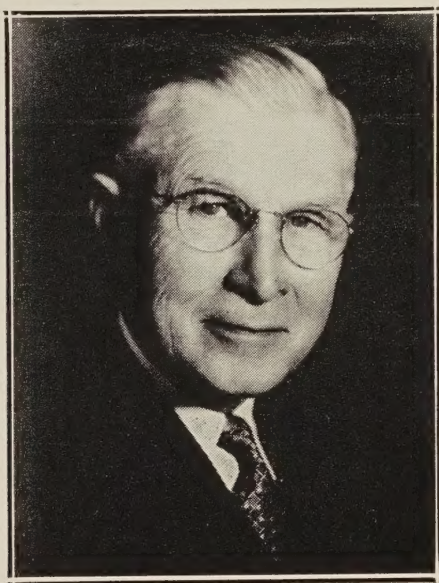
*Return Postage Guaranteed*

**DEALERS' & GROWERS' WHOLESALE PRICES**

**FALL 1951**

**SPRING 1952**

**U. S. Dept of Agric.  
Washington,  
D.C.**



---

WHOLESALE

STRONG STOCK SUITABLE FOR RESALE

PRICES NET CASH

Varieties Guaranteed True to Name

No Charge for Packing

Iris shipped after July 1. Peonies shipped after September 1

Poppies shipped after August 1

Hemerocallis shipped at once if desired

Early orders advised as some stocks are limited

Owing to increased Labor Costs, we have been forced to eliminate the 20c price for single Iris. Varieties where no single price is listed can be had for 25c each.

All Prices F.O.B. Van Wert, Ohio

If shipment by parcel post is desired, send enough to cover postal charges. Balance not used will be returned promptly.

Shipments by railway express are sent collect.

---

## IRISES

## All One Year Stock

	Wholesale Prices			
	1	3	5-10	25 or More
Abelard (H. Sass) S. livid brown, F. purple		.15	.12	.08
Airy Dream (Sturt) Clr. soft pink; self; 33"		.15	.12	.08
Aladdin's Wish—Blue brushed cream, large	1.00		.75	
Alan Hoyt—Brown and buff bi-color		.15	.12	.08
Alastor—Cyclamen pink; A.M.	.35		.25	
Alcazar—Purple-violet		.15	.12	.08
Alice Harding (Cay) Soft satin yellow		.15	.12	.10
Aline (Ste) Fine deep blue		.15	.15	.12
Allure—S. pink, F. rose pink, rich, 40"		.15	.12	.08
Al-Lu-We—Tall, large variegata, 40"		.15	.12	.08
Allies—Red		.15	.12	.08
Alta California—Yellow branched low, 48"		.15	.12	.10
Ambassador (Vil) S. bronze; F. maroon		.15	.15	.12
Amenti (H. Sass) Soft tan and lilac blend		.15	.12	.08
Amethyst Dome. 36" S. Pure amethyst; F. Dahlia carmine	.25	.20	.15	
Amigo—Lavender and deep violet, white	.35		.25	
Andromede (Vil) New and rare		.15	.12	.08
Angelus (Egelberg) Lilac pink blend	.25		.20	.15
Anitra (Sass) Verbena vio. self, large, 36"	.25	.20	.15	
Anna Gage (Gage) S. Olive; F. Brown	.25		.20	
Annelia—Plicata, fine fragrant, 30"		.15	.12	.08
Anne-Marie Cayeux—Pink, lil., extra fine, 36"		.15	.12	.10
Apaches—S. Coppery Red; F. Brown		.15	.12	.08
Apricot Glow (Weis-Schr) Rosy apricot, 36"	.25		.20	.15
Arab Chief—Burnt orange, large	.60		.50	
Arctic—Creamy white and gold	.25		.20	.15
At Dawning (Kirk) Pink white & rose blend		.15	.12	.10
Aubanel (Cay) Shrimp-pink	.25		.20	.15
Aurex (Nich) S. yellow F. purple		.15	.12	.08
Autumn Dawn—Soft pink. Fall bloomer	.30		.30	
Autumn Elf (Brown) Fall bloomer		.18	.15	.12
Autumn Frost (Schr.) Frosty white	.30		.25	
Autumn Haze (Sass) S. wine; F. velvet-violet	.25		.20	.15
Autumn King (Sass) Blooms spring & fall		.18	.15	.12
Autumn King Junior—Blue, lav. bicolor		.18	.15	.12
Autumn Surprise—S. & F. bl. vio., fall bloom.		.18	.15	.12
Azure Skies—Ruffled lavender-blue	.50		.40	.30
Baldwin (H. Sass) Violet self; fine large, 40"		.15	.12	.08
Ballet Girl (Sass) Pure blush pink	.35		.30	
Balmung—Yellow, plicata, H. M. 1940	.35		.30	.25
Bayside—44". E. rich velvety bicolor		.15	.12	.08
Bandmaster (Hall) Very large, medium blue. 36" to 40". H.M., A.I.S., '44	.65	.60	.55	
Belmont (Wil) 36 in. Very early blue-self	.40	.35	.30	
Beotie (Cay) Metallic blueish lavender, 48"		.15	.12	.10
Beowulf (Schr) True maroon red		.20	.15	.10
Berkeley Fire (Salb.) 36". A fine red bicolor	.30		.25	
Berkley Gold—Clear yellow, late, 32"	.45		.40	
Bertha Gersdorf (J. Sass) Oddly feathered flower of pale yellow, marked rosy purple. Large, 36"	.65		.50	
Beverly—Fine deep pink, good size	.75			
Black Forest—"Black as pitch"; H.M.; A.I.S.	1.25			
Black Magic—Blackish purple		.25	.20	
Black Wings—Deep blue black, fine	.25		.20	.15
Blazing Star (Nich) Yellow		.15	.12	.08
Blended Beauty (Weed) Golden Bronze		.20	.18	
Blenheim (Stern) Rich bronze & violet		.20	.15	.12
Blue Frills—Pure azure blue	1.25		1.00	
Blue Gown—Tall blue self, large		.20	.15	

	1	3	5-10	25 or More
Blue Heaven—Very dark blue .....		.25	.20	.18
Blue Hill—Blue self, white beard, hardy .....		.15	.12	.10
Blue June (Don) Pale blue lavender .....		.15	.12	.10
Blue Melody—Light blue self .....	.35		.30	
Blue Monarch—Soft blue; taffeta sheen .....		.20	.15	.12
Blue Peter—Dark blue-purple .....		.25	.20	
Blue Rhythm—Large cornflower blue .....	2.00		1.75	
Blue Shimmer—Plicata. Dappled with blue..	.60	.55	.50	
Blue Torch—Light lavender and purple; 34"		.15	.12	.08
Blue Triumph (Grin) 42" fine pale blue.....		.15	.12	.10
Blue Velvet—Velvety. best dark blue, 40" ...		.20	.20	
Blue Zenith—Ruffled light campanula blue	.40		.35	
Boadicea—Soft apricot, blend, vigorous .....		.15	.12	.08
Bonsor—Deep velvety blue .....	.25		.20	
Bountiful Blue—Fall blooming, blue .....		.18	.15	.12
Bright Lights—A bright waxy yellow .....	1.00		.75	
Bronzino (Salb) Frosty golden bronze, 40"....		.15	.12	.08
Brown Thrasher—Newest and best brown ...	.60		.50	
Bryce Canyon—Red-brown with henna .....	1.50		1.25	
Buckskin—Buckskin tan, large flowers .....		.20	.15	.12
Buechley Giant—Med. bl.; bi-color, ex. lg.	.25	.20	.20	.15
Buffawn—S. light fawn; F. light pinkish buff overlaid smoky lavender, veined old gold	.30	.25	.20	.18
Burning Bronze (Ayres) Dk. reddish bronze		.25	.20	
Buttercup Lane—Rich buttercup yellow .....	.30		.25	.20
Buto (Sass) Deep blue purple .....		.15	.12	.10
Cadetou—S. yellow; F. garnet .....	.30		.25	
Cafe Au Lait (Graham) Soft creamy tan, self		.15	.12	.10
Calcutta (Klein) cocoa brown, flecked, 42"....		.25	.20	
California Gold—Tall golden yellow .....	.25		.20	.20
California Peach—Delicate pink and apricot	.30		.25	.20
Capri—36". Fawn yellow. Unusual .....		.15	.12	.08
Caprice (Vil) S. rosy; F. rosy red .....		.15	.12	.08
Capt. Wells—Maroon-purple .....	.50		.40	
Cardinal—S. lav., F. pur., fragrant .....		.15	.12	
Caroline Burr—Ivory white .....	.40		.35	
Casa Morena (DeFor.) Rich coppery brown self .....	1.00			
Cascade Splendor (Klein) Colorful crimped flower of pink, apricot and tan. Tall	1.50			
Castalia (Will) Large blue self., frag. 36"....		.15	.15	.12
Cecil Minturn—Pink .....		.15	.12	.08
Challenger—Very dark purple .....		.15	.12	.10
Champaign Glow—Large yellow flowers .....	.30		.20	.12
Chantilly—Crinkled and ruffled .....	1.25		1.00	
Charm (Mit.) 30". Glowing strawberry red ...	.50		.45	
Chartier (Hall) Tall white .....		.15	.12	.08
Cheerio (Ayr) S. tan. F. vel. red, fine.....		.15	.15	.12
Chenoc—Very large blue, 40" .....	.30		.25	
Chief Sidar (Gage) Rose red, 46" .....		.15	.12	.10
Chestnut Hill (Gage) Deep yel. self, frag. 45"	.50		.40	
China Maid (Mill) Blend of pink, bronze, lilac	.40	.35	.30	.25
China Rose (Sal) Decided orchid coloring.....		.15	.12	.10
Chivalry (Wills.) Dykes Medal 1947, and one of the most outstanding Iris in medium blue range .....	3.00			
Chloris (Knorr) Light pink self .....		.15	.12	.10
Christobel—Brilliant red .....	.35	.30	.25	
City of Lincoln (H. P. Sass) Variegata, best to date .....	.30		.25	.20
Clara Noyes—Rich blend .....		.15	.12	
Claribel (J. Sass) S. white frilled blue, F. wh.		.18	.15	.15
Copper Lustre—(Kirk) copper & gold blend	.25		.20	.18
Copper Piece (Kell) Coppery etruscan red, 34"	.25		.20	.15
Copper Pink—Large, soft pink, copper .....		.25	.20	
Copper Rose—Blend old rose, tan, copper ....	.40		.35	
Coppersmith—Copper color sheen .....		.15	.12	.10

	1	3	5-10	25 or More
Coral Mist—Pink and deeper coral .....	1.00			
Coritica—Rich brown tone .....	.50			
Coronation—Yellow, one of best .....		.15	.12	.10
Coronet (D. Hall) Blended self of golden tan H. M. 1939 .....		.15	.12	.08
Crimson Tide (Nic) Very large brilliant red .....	.50		.35	
Crown Hill—Blue bi-color, ruffled .....		.20	.15	.12
Crown Jewel—Burnt orange effect, fine .....		.15	.12	.10
Crown of Gold—36 in. Good new yellow .....	.50			
Cryoso—Rich yellow, very early, 26" .....		.15	.12	.08
Crystal Beauty—(Sass) large white, branch .....		.15	.12	.08
Cub Bear—Royal purple, 42" .....		.15	.12	.08
Cyrus the Great—Large deep violet .....		.15	.12	.10
Dalila (Den) S. White; F. red .....		.15	.12	.10
Damerine—Deep rich red .....	.30		.25	
Damozel (Mor) Ruffled white .....		.15	.12	.10
Danube—Dark blue self .....		.15	.10	.08
Dauntless—Red pur., tall and large, 40" .....		.15	.12	.10
Dawning Day—Large golden yellow .....		.25	.20	
Daybreak (Klein) Huge golden pink .....	.50		.35	
Day Dream—Tall pink blend, 42" .....		.15	.12	.08
Dazzler—Red .....		.15	.12	.08
Decennial—S. yel., F. dahlia car., fragrant .....		.15	.12	.08
Deep Velvet—Blackish red-purple .....	.30		.25	
Depute Nomblot—Dyke's medal, bronze, tall .....		.15	.12	.08
Derek Meyer—E. rich velvety violet .....	.25		.20	.12
Derrill Hart—S. rose, F. wine .....		.15	.12	
Deseret (Thor) Variegata 40" .....		.20	.15	.12
Desert Gold—Yellow, early, large .....		.15	.12	.10
Destiny (Bugg) Faint blue purple, fine .....		.20	.15	.10
Dinah Shore—Honey orange. Pure self .....	.50	.45	.40	
Directeur Pinelle (Cay) Dk. bronze red .....		.20	.15	.10
Distinction (Cay) Soft rose .....		.15	.10	.08
Dog Rose—Delicate soft pink, superb, 50" .....		.15	.12	.10
Don Juan—Light rosy lilac .....		.15	.12	
Dorcas Hutcheson—Bicolor fall bloomer .....		.25	.20	.18
Dor. K. Williamson—Rich purple .....		.15	.12	
Doxa (H. P. Sass) Olive tints, unus., early, 24" .....		.15	.12	.10
Dubrovnik (Wmsn) Blend of deep rose and gold, 38" .....	.25	.20	.15	.12
Duke of York (Perry) Mauve .....		.15	.10	.08
Dymia (Shub) Deep purple self, 38" .....		.15	.12	.08
Easter Morn—Pure white, tall, heavy texture .....	.25		.25	
Eclador—Large yellow; frilled .....		.25	.20	
E. B. Williamson—Coppery red .....		.20	.15	.10
Eclat (Gage) Blend of pink and copper .....		.15	.12	.08
Ed. Michel (Verd) Deep red violet .....		.15	.12	.08
El Capitan—Violet lav., large, 40" .....		.15	.12	
Fleanor Roosevelt—Pur. self, fall bloomer .....		.18	.15	.12
Electra (J. Sass.) White and purple .....		.15	.12	.10
Elkhart (Laph) Deep chestnut red, large .....		.15	.12	.10
Ella Winchester (Grin) Intense red .....		.20	.15	.12
Elmohr—Tall Wm. Mohr, fine .....	.40		.35	.30
El Morrocco—Beautiful opal pink .....	.40		.30	.25
Elsa Sass—Sulphur yellow .....	.25	.20	.15	.12
El Tovar (Sass) Massive blend, tall, late .....		.15	.12	.08
Erebian—Bordeaux red, self, 40" .....		.15	.12	.08
Eros (Mead) Pale coral pink, tall, fine .....		.15	.12	.10
Ethel Peckham (Will) Fine red .....	.25		.20	
Ethelwynn Dubuar—Deep pink self, 40" .....		.15	.12	.10
Euphony (H. Sass) Ruffled copper blend .....		.15	.12	.08
Evolution—Copper bronze, exquisite .....		.15	.12	
Evolved—48". Bronze-violet blend .....		.15	.12	.08
Exclusive—Clear light blue .....	.25	.20	.18	.15
Fair Elaine (Mit.) Cream white and gold .....	.25		.20	
Fairylea (Hall) All white plicata, yel. beard .....		.15	.12	.10
Falklands—36". Hardy new snow white .....		.15	.12	.10

	1	3	5-10	25 or More
Far West (Klein) Gold, salmon, coral, henna blend .....		.20	.18	
<b>Fascination</b> —Rich pink self, satiny texture ..		.15	.12	.08
<b>Ferric</b> —Light and red purple .....		.15	.12	
<b>Firebrand</b> —Gold-red bicolor, late .....		.15	.12	
<b>Firegod</b> —Rich reddish brown .....		.15	.12	.10
<b>Flamingo</b> —Rose red, unusual .....		.15	.12	.10
<b>Flaming Torch</b> —32 in. S. hellebore; F. neu- tral red .....		.15	.12	.10
<b>Flora Campbell</b> —Rich russet-red self .....		.15	.12	.08
<b>Flora Zenor</b> —Melting cameo-pink .....	.25		.20	.15
<b>Fortune</b> (Klein) Coppery, brown-gold self ..	.30		.25	
<b>Francesca</b> —40". New deep pink self .....		.20	.15	.12
<b>Francheville</b> —S. fawn, F. red purple .....		.15	.12	.08
<b>Frank Adams</b> (Laph) S. yel. F. crushed strawberry .....		.20	.18	.15
<b>French Maid</b> —Pink blend .....		.15	.12	.08
<b>Frieda Mohr</b> —Pink bi-color, large and tall..		.18	.15	.15
<b>Frivolite</b> —Shrimp pink, blend, fine, 40" .....		.15	.12	.10
<b>Garden Flame</b> (H. Sass) Garnet-red self with golden beard .....	.75		.65	
<b>Gallant Leader</b> (Weis) S. rose-red .....	.35		.30	
<b>Garden Magic</b> (Grint) Velvety red, late, tall	.30	.25	.20	.18
<b>Geo. Yeld</b> (Per) S. apricot; F. rose crim....		.15	.12	.08
<b>Germanica</b> —Old Grandmothers Early Blue..		.15	.12	.08
<b>Giant Baldwin</b> —Med. blue, gigantic, 42" .....		.15	.12	.10
<b>Gleam</b> —Soft blue self, best of class, 42" ...		.15	.12	.08
<b>Glen Ellen</b> (Con) Luminous golden tan .....		.15	.12	.10
<b>Gloriole</b> —Violet, greenish center, very large	.30		.25	.20
<b>Glow Port</b> —Exceptional Iris of wine-red.....	.35		.30	
<b>Gobelin Red</b> —New red iris, ox blood, 30" ...		.15	.12	.08
<b>Gold Coast</b> (Pilk) New English yellow .....	.35		.25	
<b>Gold Champion</b> —36" Huge brt. canary yel.		.20	.15	
<b>Gold Imperial</b> —Chrome yellow; good .....		.15	.12	.08
<b>Gold Queen</b> —Interesting new yellow .....		.15	.12	.08
<b>Gold Wing</b> —Large yellow .....		.15	.12	.08
<b>Golden Age</b> —A large yellow self .....	.25		.20	
<b>Golden Arrow</b> —42". Large pure lemon yel.; F. flaring .....		.15	.12	.08
<b>Golden Bear</b> (Mite.) Rich golden yellow. 36"	.25		.20	
<b>Golden Bow</b> (H. P. Sass) Large flowers of chrome yellow .....		.15	.12	.10
<b>Golden Cataract</b> (Dysart) Fine yel., fl. bloom		.25	.20	
<b>Golden Fleece</b> Lemon standards, gold edge ..	.50		.40	
<b>Golden Hind</b> (Chad) Yel. tint. with orange		.20	.18	.15
<b>Golden Image</b> —36", Clear deep pure yellow		.20	.15	.12
<b>Golden Majesty</b> —H.M.A.I.S. 1939 .....	.30		.25	.20
<b>Golden Slippers</b> (Deforest) Daffodil yel., 36"		.20	.15	.12
<b>Golden Spike</b> —Deep golden yellow, large ...	.30		.25	.20
<b>Golden Star</b> —Pure deep gold .....	.50		.35	
<b>Golden Treasure</b> (Shr) Like cream col. silk..	.25		.20	.15
<b>Good Cheer</b> (Stur.) S. clear yel.; F. bright yel.	.25	.20	.15	.12
<b>Grace Lapham</b> (Laph) Pink, slightly flushed lavender .....		.15	.12	.08
<b>Grace Mohr</b> (Jory) Lt. lav. veined manganese	.25		.20	.18
<b>Grace Sturtevant</b> —Red pur., fragrant, 36" ....		.15	.12	.08
<b>Grandiosa</b> —Large, L. A. Will. frag., 40" .....		.15	.12	.08
<b>Grand Canyon</b> —Odd blend of plum, copper and gold .....	.35		.30	.25
<b>Grand Monarch</b> —Vel. bronze red .....		.15	.12	.08
<b>Great Lakes</b> —Fine new blue .....	.35		.30	.25
<b>Gudrun</b> —Very large, pure white .....		.15	.12	.10
<b>Gypsy</b> (Klein) Orangy cast variegata .....	.65		.55	
<b>Halloween Night</b> —Bright lemon yellow .....	.50		.40	
<b>Happy Days</b> —(Miz) Large fine yellow .....		.20	.20	.15
<b>Harriet Thoreau</b> (Cook) New orchid-pink self. Tall. H.M., A.I.S. 1945 .....	.60		.50	



	1	3	5-10	25 or More
Hearthstone Copper—Old gold and cop., 30"		.15	.12	.08
Helaine (Mil.) White petals bordered with deep blue-violet lines .....	.30	.25	.20	.15
Helen M. Riedel (Riedel) 38" Fine orange bld.		.15	.12	.08
Helen McGregor (Graves) Clear pale blue. H.M., A.I.S. 1946 .....	3.50		3.00	
Hernani—French red, broad falls .....		.15	.12	.08
Homerun—36" S. bronze; F. Alizerine. Ex. fine		.15	.12	.08
Hoosier Sunrise—Mauve pink and yellow ...	.40		.30	
Icy Blue—Lightest of blue, beautiful .....	.30		.20	
Imperial Blush—Large soft pink .....	.30		.25	.20
Indian Chief—Red pur., popular .....		.15	.12	.08
Indian Hills—(Gra & Schr) Rich true purple	.25	.20	.15	.12
Indigo Bunting—Unusual blue .....		.15	.12	.10
Inspiration—Cerise-rose. Huge and different	.60		.50	
Irma Pollock—S. mag., F. vel. car. fine 36"		.15	.12	.08
Itasca (Klein) Rich amethyst-purple .....	.30	.25	.20	
Jake (Sass) Very fine new white .....	.30		.25	.20
Jasmania (Ayres) Tall deep yellow, 42" ...		.15	.12	
Jasper Agate—Copper-gold-red .....	1.00		.85	
Jean Cayeux—G. & br. blend; Dyke's medal		.20	.18	.15
Jean Lafitte (Wash) Coppery Rose blend 39"		.15	.12	.08
Jeb Stuart—Velvety rich red, fine .....		.20	.15	.15
Jerry—Very bright red, tall, large, 36".....		.15	.12	.10
Jelloway—Clean yellow .....	.35			
Jolly Roger—Indigo .....		.15	.12	.10
Joyance—Cream white, gala haft.....		.15	.12	.10
Junaluska (Kirk) Flush copper and rose ...		.20	.18	.15
Kalinga (Klein) Creamy wh., excellent form		.15	.12	.10
Katherine Fay—Grand white; large .....	1.50		1.25	
Katisha (Hall) Tourmaline pink .....		.15	.12	.10
Kensington .....		.15	.12	.10
Khiva—40" Rich red-toned self .....		.15	.12	
King Juba—New variegata, much admir. 36"		.15	.12	.08
King Karl .....		.15	.12	.10
Kinglet (Wmsn) Yellow "Table Iris" .....		.15	.12	.10
King Midas—S. buff, F. gar., unique color .....		.15	.12	.10
King's Ransom (Mil.) 48" White, wavy petals	.30		.25	
King Tut—Red brown, outstanding .....		.15	.12	.08
Klondyke Gold—Deep, pure yellow .....	.30		.25	.20
Kochii (Wild in Italy) Claret and purple....		.15	.12	.08
Kublai-Khan—Rosy red bicolor .....		.15	.12	.08
Kwan Yin—Lovely apricot self, large .....		.15	.12	
Lady Mohr—Oyster white; falls chartreuse ..	.85		.75	
Lady Paramount—Famous yellow .....		.15	.12	.08
Lake Huron (Sass) Medium toned blue self	.25	.20	.15	
Lamplight (Schr.) Fresh buff self, no veins	1.25			
Lancaster (Cook) Excellent old rose .....	.25		.20	.15
Laura Hutcheson (H. Sass) Red-pink cast ...		.20	.18	.15
Lavender & Old Lace—38" Lavender-violet; slightly fragrant .....		.15	.12	.10
Lecocq—30" Blue violet .....		.15	.12	
Le Correge—Lighter Ambassadeur .....		.15	.12	.10
Legend—Crim. claret, finer than Cardinal ...		.15	.12	.10
Le Grand Ferre (Cay) S. gray; F. reddish....		.15	.12	.08
Lighthouse—S. Strawberry F. Da. Vio .....	.25	.20	.18	.15
Lights On—One of the reddest Irises .....	2.50		2.00	
Lilamani (J. Sass) Velvety blackish self, lrg.		.15	.12	.10
Lillian Toedt—Vivacious rose .....		.15	.12	.10
Lord Dongan—Striking; deep pansy violet ..	.65		.60	
Lord Lambourne (Per) Dusky red effect....		.15	.12	
Los Angeles—White, blue edge, fine form....	.25		.25	.20
Lothario (Schr.) An Amigo-type amoena. Rich and velvety .....	.85		.75	
Louvois (Cay) Brown and Maroon 36" .....	.25	.20	.15	.12
Lucrezia Bori (Sch) Soft yellow, very tall. lg.		.15	.15	.12
Lux. Strawberry .....		.15	.12	.08

	1	3	5-10	25 or More
<b>Magenta</b> —Red purple, self, good .....		.15	.12	
<b>Maid of Astolat</b> (J. Sass) Blue and wh. plicata .....		.20	.18	
<b>Maisie Lowe</b> —New dark blue, bi-color .....		.15	.12	.10
<b>Majenica</b> (Cook) New pinkish blend .....	.40		.35	
<b>Majestic Rose</b> —Brilliant rosy violet .....	.25		.20	.12
<b>M. A. Porter</b> —Deep violet, self, large & vig. ....		.15	.12	.08
<b>Marco Polo</b> (Schr) Rich glowing pink .....		.15	.12	.08
<b>Marisha</b> (J. Sass) S. cream, F. light pink .....		.15	.12	.10
<b>Marquita</b> —Ivory yellow, large fine form .....	.25		.20	.18
<b>Martie Everest</b> —Fall blooming bicolor .....	.25		.20	
<b>Mary Barnet</b> (Cumb) Imp. Princess Bea. ....		.15	.12	.08
<b>Mary E. Nichols</b> —Frosty white, well formed .....	.25		.20	
<b>Mary Geddes</b> —Pom. red blend, unique, 38" .....		.15	.12	.08
<b>Mary Gibson</b> (Per) Rose bronze blend .....		.15	.12	.08
<b>Mary Senni</b> —Mauve blend, 42" .....		.15	.12	.08
<b>Master Charles</b> (Wmsn.) Mulberry-purple .....	.85		.75	
<b>Mata Hari</b> —A deep blue-violet .....	.30		.25	
<b>Matterhorn</b> (J. Sass) Finest pure white, lrg. ....	.30		.25	
<b>Matula S.</b> —Apricot, F. Indian Lake .....		.20	.15	.12
<b>Maud Deming</b> (Laph) S. lilac, F. red purple .....		.15	.12	.08
<b>May Day</b> (Hall) Apricot-salmon self .....		.15	.12	.12
<b>Melanie</b> —Orchid-pink, tall stems .....		.15	.12	.10
<b>Melchior</b> —Purple .....		.15	.12	.08
<b>Melitza</b> —Ivory pink .....	.25	.20	.15	.10
<b>Mellow Glow</b> (Whit.) Deep peach flushed pink, 38" .....	1.75			
<b>Mexico</b> —Gay, brilliant buff and brown .....	.85		.75	
<b>Michelangelo</b> (Weed) Very unusual tan .....		.15	.12	.10
<b>Midwest Gem</b> (H. P. Sass) Light yel. blend .....		.20	.15	.12
<b>Mildred Presby</b> (Farr) S. white; F. vio. ....		.15	.12	.08
<b>Ming Yellow</b> (Glutz) Large, smooth yellow, faultless, 37" .....	.35		.30	.25
<b>Minnie Colquitt</b> (H. Sass) White plicata. Different .....	.85		.75	
<b>Miobelle</b> (McKee) A lustrous rose self. Very good substance .....	1.00			
<b>Miss Ann</b> —Dainty flower of pearly pink .....		.15	.12	.10
<b>Miss California</b> (Salb) Beautiful rose lilac .....	.25		.20	.15
<b>Missouri</b> (Gri) Fine blue, great iris, 44" .....	.25		.25	.25
<b>Mme. Louis Aureau</b> (Cayeux) Plicata .....		.15	.12	.10
<b>Modiste</b> (D. Hall) a smooth silky lavender mauve. Large 38" .....		.15	.12	.10
<b>Mohrson</b> —Improved Wm. Mohr. Violet .....	.30		.25	
<b>Monadnock</b> (Salb) Gigantic vivid rose red .....	.25		.20	
<b>Moonglo</b> (Will) Soft yellow blend, large 32" .....		.15	.12	.08
<b>Moonlight Madonna</b> —Lge. ruffled lemon ice .....	.60		.50	.40
<b>Moonlight</b> —Silver .....		.15	.12	.10
<b>Morning Splendor</b> (Shull) Red purple .....		.15	.12	.10
<b>Morocco Rose</b> (Loomis) Glow. rich pink, 32" .....	.30		.25	.20
<b>Motif</b> —Dark vel. pur., excellent .....		.15	.12	.08
<b>Mountain Snow</b> (Kell) A fine blue white .....		.20	.18	
<b>Mountain Sunset</b> —Fawn and old gold .....		.20	.15	.12
<b>Mount Cloud</b> —White self, fragrant .....		.15	.12	.10
<b>Mt. Washington</b> —A gigantic white, 50" .....	.30	.25	.20	
<b>Mozambique</b> (M & R) Large red purple .....		.15	.12	.08
<b>Mozo</b> —New red dwarf .....	.30		.25	
<b>Mrs. Gamelia</b> —Lavender-blue self .....		.15	.12	.08
<b>Mrs. Herbert Hoover</b> —Rose bicolor .....		.15	.12	.08
<b>Mrs. J. L. Gibson</b> —Deep violet .....		.15	.12	.10
<b>Mrs. Silas Waters</b> (Ayres) Fine pale yellow .....	.40		.30	
<b>Mrs. Willard Jacques</b> (J. Sass) Pink and cream blend .....		.15	.12	.08
<b>Mt. Royal</b> —Large pansy-purple, early .....		.15	.12	.10
<b>Mulberry Rose</b> —Deep mulberry-pink, tall ..	.50		.40	.35
<b>Mussolini</b> —Vivid blue pur. Eng., sil. medal .....		.15	.12	.08
<b>My Maryland</b> —Fragrant violet purple, 44" .....		.15	.12	.08
<b>Narain</b> (Shub) Medium blue, self, 36" .....		.15	.12	.12

	1	3	5-10	25 or More
Naranja (Mitch) Rich yellow self. ....		.15	.12	.10
Nene—Largest Iris grown .....		.15	.12	.08
Nightfall—Dark pansy-purple .....	.40		.30	
Nightingale (Hall) Golden russet .....	.50		.40	
Noonday Sky—Lavender-blue, slightly fragr.	.25	.20	.15	
Norrona—Bright blue .....		.15	.12	.08
No-We-Ta—Dainty pink blend, exquisite, 32"		.15	.12	.08
Numa Roumestan—Dark strawberry red, late		.15	.12	.08
Nylon—Coppery tan with gold beard .....	.25	.20	.15	.12
October Blaze (McDade) Deep red-violet ....	.30		.25	
October Opera—Rich velvety purple .....		.20	.20	
Ojibway (Kirk) Coppery Indian color .....		.15	.12	.10
Ola Kala—Deep yellow ruffled self, fine ....	.65	.55	.50	.40
Old Parchment—Creamy tan with gold ruff	.25	.20	.15	
Olive White—Deep cream, fall bloomer .....		.18	.15	
Orange Flame—Golden orange and copper bronze .....	.25	.20	.15	
Oregon Sunshine (Weed) Light yellow, 38"		.15	.12	.10
Orloff (H. P. Sass) Yellow, red brown plicata	.25	.20	.15	.12
Ormaco (Klein) Mystic violet with bronze and true brown .....	.50			
Ormoehr (Klein) Grayish purple, huge blooms	.25		.20	.18
Ossar (H. P. Sass) Blackish red self .....		.15	.12	.08
Ozark Blue (Jay) Light blue self .....		.15	.12	.08
Ozone (J. Sass) Blue grey blend .....		.15	.12	.08
Packard Blue—Late, rich blue .....		.15	.12	.08
Painted Desert (Mill) Brilliant coloring of Arizona Mesa .....	.60	.50	.40	.30
Pale Moonlight—Pale blue, H. M. A. I. S. 33"		.20	.20	
Palerme .....	.25		.20	
Pallida Dalmatica (Wild) Lavender .....		.15	.12	.08
Paltec (Den) Lt. blue, low grow., fall bloom		.15	.12	.10
Papio—Pansy-purple, early .....		.15	.12	.08
Paulette—Light bicolor, very large blue .....		.15	.12	.10
Peachblow (H. Sass) Pinkish plicata with yellow ground .....	.60		.50	
Peggy Babington—Fall bloomer, deep yellow		.18	.15	.12
Persia—Blue toned, unique coloring .....		.15	.12	.10
Peshawar (Sch.) 26" Rich brown purple .....		.15	.12	.08
Pink Cameo—New "flamingo" pink of violet influence. Tangerine beard .....	2.00			
Picador—Large variegata, brilliant, 40" ....		.15	.12	.08
Pink Opal—(Sass) Large pink lilac self .....		.15	.15	.12
Pink Reflection—A fine hydrangea pink .....	.75			
Pink Ruffles—Pale and deep pink ruffles ....	.40		.35	
Pink Satin—True pink, self, tall & Fine .....	.25		.20	.20
Piute (Thom) Pure rich red, fine .....		.20	.15	
Platon—Huge deep violet .....		.15	.12	.10
Platinum Beauty—Pastel lilac-pink blend ....		.15	.12	.10
Plum D'Or—Yellow, Dykes medal winner .....		.15	.12	.10
Prairie Sunset—Sunset effect .....	.50		.40	.30
Pres. Pilkington—Buff, blue and lav. blend ....		.15	.12	.08
Primat (Cay) Light pink toned .....		.15	.12	.08
Princess Beatrice (Barr) Light lav.; fine ....		.15	.12	.08
Priscilla (Whit.) A white with white beard ..	.60		.55	
Purple Giant (Gage) Fine red purple, bronzy beard .....		.15	.12	.10
Purple Silk—Rich silky purple, early .....		.15	.12	.10
Queen of May (Sal) Lilac pink; early .....		.15	.12	.08
Radiant (Salb) Coppery orange, gigantic .....	.25		.20	
Rae Jean—Late blooming, yellow .....		.15	.12	.08
Rambeau—Blue ultramarine self .....		.15	.12	
Rameses—Blend, Dykes medal win. 1932, 36"		.15	.12	.10
Ranger—Large blooms, crimson color .....	.75		.60	
Rebellion (Klein) Glowing deep blood red ....		.20	.15	
Red Bonnet—Dark red flowers, fine form ....		.20	.15	.12
Red Dominion—S. red, F. vel. red, rich. 42"		.20	.20	.15

	1	3	5-10	25 or More
Red Gleam—Rich red, velvety, brilliant .....	.50		.40	
Red Glory—S. soft rose; F. coppery red .....	.35		.25	
Red Meadow—32" S. hydrangea red; F. violet carmine .....		.15	.12	.10
Red Orchid—(Sass) Intermediate red, 28" .....		.15	.12	.10
Red Radiance—Rich glowing red, 38" .....		.18	.15	.12
Red Sox .....		.15	.12	.10
Red Sunset—S. brownish rose; F. carmine....	.25		.15	
Red Valor—Garnet-red, magnificent .....	.60		.50	
Regal Beauty—S. light violet; F. blackish ..		.15	.12	
Remembrance—Pink and light yellow, large	.50		.40	
Rhages—Large violet plicata .....		.15	.12	.08
Rhapsody—Violet, purple and brown .....	.50		.35	
Rheingauferle—Soft pink orchid, fine, 40" .....		.15	.12	.08
Rhein Nixe (G&K) S. white; F. blue; late....		.15	.12	.08
Rheintochter—White and purple bicolor .....		.15	.12	.10
Rob Roy—Maroon red .....		.15	.12	
Rocket (Whit.) An orange self, standards pure chrome .....	3.00		2.50	
Rosalind (Bliss) Pink mauve; tall; late ....		.15	.12	.08
Rose Bronze Blend—Bronze-brown, flushed rose .....		.15	.12	
Rose Dominion—Amer. B. rose col., frag., 27"		.15	.12	.10
Rose Top—Plicata of cream yellow .....	.75		.60	
Rosy Wings—Dykes Medal '39, rose .....		.15	.12	.10
Royal Coach—Bright yellow plicata .....		.15	.12	.10
Royal Scot—Red plicata .....	.65		.55	
Rubeo (Mit & Mohr) A good red .....		.15	.12	.10
Ruby Velvet—Dark red bicolor .....	.30	.25	.20	
Russet Mantle—Russet brown .....	.50		.40	
Ruth Pollock—Fine yellow plicata, A. M. ....	.25	.20	.15	.12
Sable (Cook) deepest blue black violet, blue beard, large, tall .....	.35		.30	.25
Salar—Blended cream and salmon .....	.25	.20	.15	
Samovar—Colorful coppery rose .....	.25	.20	.15	.10
Sandalwood (H. P. Sass) Army brown, large		.15	.12	.10
Sandia (Will) Vigorous, deep pink blend 40"		.15	.12	.08
Sand Tone—New light yellow effect .....		.15	.12	.08
San Francisco—Wh. plicata, beautiful, 40"....	.25		.25	
Sangreal (Sass) Yellow fall bloomer .....		.18	.15	.12
San Luis Rey—Improved opera, rich color ...		.15	.12	.08
Santa Barbara—Blue self .....		.15	.15	
Sapphire Night (Nich) Deep indigo blue .....		.15	.12	.08
Saracen—Brownish Indian red .....	.25	.20	.15	.10
Sargon—Magnificent dark purple bicolor ...	.25	.20	.15	.10
Schooner (McDade) White, large .....		.15	.12	.08
Sea Dawn—Yellow blend .....		.15	.12	.08
Sea Deep—Tall medium blue bicolor .....		.15	.12	.10
Selene—Extra large white, 40" .....		.15	.12	.08
Sensation—Analine blue, frag. ....		.15	.15	.12
September Skies—16", clear purple-red .....		.18	.15	.12
Shah Jehan (Neel) Rich oriental colors .....		.15	.12	.08
Shannopin (Pil) S. yellow; F. pink .....	.30	.25	.20	.12
Shantung .....		.20	.15	.12
Sharkskin (Doug.) Very fine pure white, lge.	.60		.50	
Shawano (Wmsn) Tall, brilliant yellow with Van Dyke red veins .....	.25	.20	.15	.10
Sheriffa—Deep plum; very popular .....	.35	.25	.20	.15
Sherwin Wright—Bright yellow .....		.15	.12	.08
Shining Waters—Sky blue .....	.25		.20	.18
Shirvan—Brownish, bi-color, brilliant .....		.15	.12	.08
Shogun—Deep maroon .....		.15	.12	.08
Siegfried (H. P. Sass) New type plicata, yel.	.25	.20	.15	.12
Sierra Blue—Clear blue Dykes medal .....	.25	.20	.15	.15
Signal Light (Kirk) Large red self, 36" .....	.25	.20	.15	.12
Silvanus—Rose and violet .....		.15	.12	.08
Silver Glaze—Sparkling silvery blue .....		.15	.12	.10

	1	3	5-10	25 or More
Skitchewaugh (Chase) Pink tone .....		.15	.12	.08
Slattlea—Light violet .....		.15	.12	.08
Smolder (Nich) Tall, large red black .....	.30		.25	
Snoqualmie (Brehm) Lge. rich smooth cream .....	.25	.20	.15	.10
Snow Belle (McKee) 38" Pearly white, lemon venations .....		.15	.12	
Snow Carnival—Outstanding ruffled white ..	.75		.75	
Snow Flurry (Rees) Pure ice white, 48" .....	.50	.45	.40	.35
Snowking (Sass) Giant white .....		.15	.12	.10
Snow Velvet—White, gardenia-like texture ..	.60		.50	
Solid Mahogany (J. Sass) New dark red, fine ..	1.25		1.00	
Solitude—Deep mulberry self .....	.30	.25	.20	.15
Sorrente—Blue and yellow blend .....	.35	.30	.25	.20
Sound Money—Good clean yellow .....		.18	.15	.12
Southland (Sass) Dp. lem. chrome self, 24" ..		.20	.20	
Souv. de L. Chavagnac—Violet, fragrant .....		.25	.25	.20
Souv. de Mme. Gaudichau (Mil) Dk. pur. ....		.15	.12	.08
Spark—Brick red .....		.15	.12	.08
Spindrift (Loom.) Delicate seashell pink with furry tangerine beard .....	1.00		.85	
Spokan—(Sass) Bright red brown blend, 36" ..		.15	.12	.08
Sporty—Light tan and purple blend .....		.15	.12	.08
Spring Cloud (Jory) Blue and white plicata ..	.25	.20	.15	
Springfield—Deep violet and garnet red .....	.35		.25	
Spring Prom (Hall) 38" Lemon-yellow. H. M. ..		.15	.12	.08
Spun Gold (Glutz) 38" Deep golden yellow ..	.50	.45	.40	
SQ 72 (Loomis) Coral-pink, self .....	.85		.75	
Stained Glass—Copper red self .....	.25	.20	.15	.10
Stardom—Onionskin pink .....		.15	.12	.08
Starless Night (J. Sass) Deep blackish red ..	.35		.30	
Stella Polaris (K. Smith) Tall, white, large ..	.35		.25	
Stripe Leaves—Blue, foliage striped .....	.25	.20	.15	
Summer Tan (Kirk) S. tan. F. bro'sh tan, 30" ..		.15	.12	
Sunburst—Yellow, apricot glow .....		.15	.12	.10
Sundance—Blend of tan and mahogany .....	.40		.35	
Sun Mist (Nich) Creamy white, 34" .....		.15	.12	.08
Sun Dust—Chrome-yellow .....		.15	.12	
Sunset Gold—32" Rich deep yellow .....		.15	.12	.08
Sunset Serenade—Golden tan and apricot ....	.50	.45	.40	.30
Sunny South (Wash.) Deep yellow self .....		.15	.12	.10
Sunset Tan—Soft buff-fawn; pinker and less bronze .....	.25		.15	
Sun Tan (Mitchell) S. Or. Tan. F. overlaid pur.		.15	.12	.08
Surefire (Nich) Fall bloomer, light yel. ....		.18	.15	.12
Susa (H. P. Sass) S. Brill. purple, F. velvety ..		.15	.12	.08
Susan Bliss (Bliss) Fine lilac pink .....		.15	.12	.08
Sweet Sixteen—Pink self, attractive .....		.15	.12	.08
Talisman—Iridescent vel. blend, frag., 32" ....		.15	.12	.08
Tan Delight—40" Buff-tan-violet blend .....		.15	.12	.08
Tapestry Rose—Soft old rose. H.M., A.I.S. '42 ..	.45			
Television Blue (Shub) Med. blue, hor. falls ..		.15	.12	.10
Tenaya—Rich deep plum purple.....		.15	.12	.10
The Admiral—Effective intense blue .....	.40		.35	
The Bishop—Purple self .....	.30	.25	.20	.15
The Black Douglas—S. dk. vio., F. bk. vio. 36" ..		.15	.15	.12
The Guardsman—Dusky pink S., darker F. ...	.25	.15	.12	
Theodolinda—Pure white plicata, 44" .....	.25		.20	.18
The Red Brick (Weed) Color of red brick, 31" ..		.15	.12	.08
The Red Douglas (J. Sass) Fine new red, orange beard .....	.35		.30	.25
Tiffanja—Distinctive yellow plicata .....	.50		.40	.35
Tiffany—Unusual yel. plicata .....	.25		.20	.15
Thuratus—New, dk., purple self, real beauty ..		.15	.12	.08
Tint O' Tan (Ayr) Bronzy tan and yellow ...		.15	.12	.08
Tobacco Road—Golden tobacco brown blend ..	1.50		1.00	
Tokay—Salmon pink, charming, 36" .....		.15	.12	.08
Token—Old gold S. flushed rose, F. rosy brn.		.15	.12	.10

	1	3	5-10	25 or More
<b>Top Sergeant</b> —Red-brown self, velvety falls		.15	.12	
<b>Torchlight</b> —Brilliant variegata		.15	.12	.10
<b>Tower of Jewels</b> —Fine brt. yellow & mauve	.25	.20	.15	
<b>Trail's End</b> (Will) Blend yel & or. red, 38"		.15	.12	.08
<b>Treasure Island</b> (Klein) Olive yel., beard dp.	.25		.20	.15
<b>True Delight</b> —Pure pink Plicata, 36"		.15	.12	.08
<b>Vagabond Prince</b> —Fine, tall purple-violet	.30		.25	
<b>Valor</b> —Dp. bl. vio., bi-color, outstanding, 50"		.15	.12	.10
<b>Varese</b> (Will) Red purple	.25	.20	.15	.12
<b>Vatican Purple</b> (Whit.) Deep, bright blue-purple	1.00		.75	
<b>Velvet Knight</b> —Dark blue self	.25	.20	.15	
<b>Velvet Wonder</b> —Dk. rich blackish red-purple	.30		.25	
<b>Venus de Milo</b> —Fine new white, 42"		.15	.12	.08
<b>Violet Crown</b> —Very tall, pure violet, 40"	.25	.20	.15	.12
<b>Violet Symphony</b> —Gleaming lilac-mauve self	.40		.35	
<b>Vision</b> (Cay) Variegata of clear yel. and bro.		.15	.12	.10
<b>Wabash</b> (Wmsn) S. white F. blue	.30		.25	.20
<b>Waconda</b> (H. Sass) Rich, fuchsia red, 38"		.15	.12	.10
<b>Wambliska</b> —White, large, fine form, 36"		.15	.12	.08
<b>Wantage</b> —24" Rich purple with black sheen		.15	.12	.08
<b>War Eagle</b> (J. Sass) Finest red toned		.15	.12	.08
<b>Wasatch</b> (Thor) Huge Plicata		.20	.15	
<b>Waverly</b> (Wil.) H.M., A.I.S. Large flowers of medium blue	.35		.30	
<b>Wedgewood</b> (Dyk) Blue self; well named		.15	.12	.10
<b>West Point</b> (Nic) Wonderful bicolor, fine	.25		.20	.18
<b>White Autumn King</b> (Sass) Pure white		.18	.15	.12
<b>White Goddess</b> —Large pure white; sturdy	.25	.20	.15	.12
<b>W. Carey Jones</b> —30" Soft clear ivory		.15	.12	.08
<b>White Marble</b> —Tall white, gold beard		.15	.12	.08
<b>White Wedgewood</b> (Grant) Porcelain-white	1.00		.85	
<b>William Mohr</b> —Lilac, veined manganese	.25		.20	.18
<b>Wine Glory</b> (Weed) Color of its name		.15	.12	.08
<b>Winneshiek</b> —Excellent dark blue iris		.15	.12	.10
<b>Winter Carnival</b> (Schr.) Fine white. New	.50		.40	
<b>Wonderchild</b> —S. vio., F. blue violet		.15	.12	.10
<b>Wotan</b> (Grin) Velvety pur. brown blend		.15	.12	.08
<b>Yakima</b> —Brilliant variegata		.15	.12	.08
<b>Yellow Champion</b>		.15	.12	.08
<b>Zebra</b> —Leaves striped white, blossoms blue	.25		.25	
<b>Zaharoon</b> —Beautiful blend, soft pastel tints		.15	.12	
<b>Zouave</b> (Vil) White and violet dotted		.15	.12	.08
<b>Zua</b> —White frosted crepe, crinkles 16"		.18	.15	.12
<b>Zulu</b> —Fine blue purple, tall	.25		.20	

## FALL BLOOMERS

These will give you bloom in the spring and again in the fall.  
No garden should be without some of them.

### Wholesale Prices

	1	3	5-10	25 or More
<b>Autumn Dawn</b> —Soft pink	.30		.30	
<b>Autumn Elf</b> (Brown) S. cream. F. lav., fra.		.18	.15	.12
<b>Autumn Frost</b> (Schr.) Frosty white	.30		.25	
<b>Autumn Haze</b> (H. Sass) Large violet purple	.25		.20	.15
<b>Autumn King</b> —36", blue purple		.18	.15	.12
<b>Autumn King Junior</b> —Blue, lav. bicolor		.18	.15	.12
<b>Autumn Surprise</b> —S and F. blue		.18	.15	.12
<b>Black Magic</b> —Blackish purple		.25	.20	
<b>Bountiful Blue</b> —Fine blue		.18	.15	.12
<b>Dorcas Hutcheson</b> —Red pink cast		.25	.20	.18
<b>Eleanor Roosevelt</b> —Deep red violet		.18	.15	.12
<b>Golden Cataract</b> (Dysart) Rich golden yel.		.25	.20	

	1	3	5-10	25 or More
<b>Glow Port</b> —An exceptional Iris in wine red ..	.35		.30	
<b>Halloween Night</b> —Bright lemon yellow .....	.50		.40	
<b>Jean Siret</b> —10", yellow flecked blue .....		.18	.15	
<b>Laura Hutcheson</b> (H. Sass) Red-pink cast ....		.20	.18	.15
<b>October Blaze</b> (McDade) Deep red-violet .....	.30		.25	
<b>October Opera</b> (H. Sass) Rich velvety purple .....		.20	.20	
<b>Olive White</b> (Sass) Deep cream, very fine ....		.18	.15	
<b>Peggy Babington</b> —28" rich dp. cl. unif. yel. ....		.18	.15	.12
<b>Saengreal</b> (Sass) Yellow fall bloomer, 28"....		.18	.15	.12
<b>September Skies</b> —16", clear purple-red .....		.18	.15	.12
<b>Southland</b> (Sass) Dp. lem. chrome self, 24" ..		.20	.20	
<b>Souv. de L. Chavagnac</b> —Violet, fragrant ....		.25	.25	.20
<b>Surefire</b> (Nich) Light yellow .....		.18	.15	.12
<b>White Aut King</b> (Sass) Pure White .....		.18	.15	.12

## BEARDLESS IRISES

	Wholesale Prices			25 or More
	1	3	5-10	
<b>Aurea</b> —Spuria yellow .....	.35			
<b>Bob White</b> —(S. B.) Waxy snow white .....	.25		.20	
<b>Caesar</b> (Sib) Dark red-purple, 30 in. ....	.35		.30	
<b>Caesar's Brother</b> (S. B.) New blue, fine .....	.35		.30	
<b>Distinction</b> (Sib) Speckled blue and white....	.25		.25	
<b>Dor. K. Williamson</b> —Dk. violet .....	.25	.15	.12	
<b>Emperor</b> —(S. B.) Dk. blue .....	.25		.15	.12
<b>Gay Heart</b> —Nice dark blue self; late .....	.30			
<b>Heavenly Blue</b> (Sib) New clear blue .....	.30		.25	
<b>Kingfisher Blue</b> —(S. B.) Bright blue .....	.25		.25	
<b>Nora Distin</b> —Blue and white .....	.30		.25	.20
<b>Ochroleuca</b> (Spuria) White and yellow .....	.25		.25	
<b>Periwinkle</b> —Deep violet purple .....	.35		.25	
<b>Perry's Blue</b> —(S. B.) One of the best blues ..	.25		.20	
<b>Pseudacorus</b> —Bright yellow, tall, late .....	.25		.18	.15
<b>Queen Victoria</b> —Very tall, white .....	.35		.30	
<b>Shelford Giant</b> —Large and tall .....	.40		.35	
<b>Skylark</b> —(S. B.) Exquisite light blue .....	.25		.20	
<b>Snow Queen</b> —(Orien) White .....	.25		.20	
<b>White Dove</b> —(S. B.) Beautiful large white..	.25		.20	

## DWARF BEARDED IRISES

	Wholesale Prices			25 or More
	1	3	5-10	
<b>Bridesmaid</b> —Pale blue and yellow .....		.18	.15	.10
<b>Fairy</b> —Light yellow .....		.18	.15	.10
<b>Harbor Lights</b> —Light yellow .....		.18	.15	
<b>Cyanea</b> —Red purple; fragrant .....		.18	.15	
<b>Jean Siret</b> —Everbloomer; cream .....		.18	.15	
<b>Laddie Boy</b> —Medium blue, bi-color, velvety ..		.18	.15	.12
<b>Lurida</b> —Col. Candelot color .....		.18	.15	.12
<b>May Night</b> —Very dark blue-purple .....		.18	.15	.12
<b>Marocain</b> —S. violet; F. pansy violet .....		.18	.15	.10
<b>Mozo</b> —New red; dwarf .....	.30		.25	
<b>Royal</b> —S. rich blue; F. reddish purple .....		.18	.15	

	1	3	5-10	25 or More
Schneekuppe—White with cream .....		.18	.15	.12
Sound Money—Good clean yellow .....		.18	.15	.12
Tony—Red purple with orange beard .....		.18	.15	.12
The Bride—White; free flowering .....		.18	.15	
Yellow Frills—Yellow; ruffled .....		.20	.20	
Zua—White crinkled .....		.18	.15	.12
Zwanenberg—Cream with maroon .....		.18	.15	.12

OWING TO INCREASED LABOR COSTS, WE HAVE BEEN FORCED TO ELIMINATE THE 20c PRICE FOR SINGLE IRIS. VARIETIES WHERE NO SINGLE PRICE IS LISTED CAN BE HAD FOR 25c EACH.

### **"A WHOLESALÉ BOUQUET"**

Here is part of a letter received in 1950 from a dealer who has been purchasing Peonies, Iris, Poppies and Hemerocallis every year since 1943. His letter reads:

"I am enclosing picture which may interest you in that the Iris are all Wassenberg, more than 250 varieties—picture only shows a small section of the plantings.

"At this time I want to compliment your firm on the excellent quality, size and condition of plants shipped — also every plant is always packed for shipping with the greatest care and order. It's a real pleasure to open a Wassenberg box.

"Thanking you for the careful attention you have given my orders, I remain,

Very truly yours,"

K. W. H.

---

We would like you to become one of our satisfied customers. We pride ourselves on our quality stock, packing and prompt delivery. Give us a try. Send your order for either direct shipment to you or your customer and be assured of the same satisfaction as Mr. K. W. H. describes in the above letter.





## ORIENTAL POPPIES

We will ship them after August 1.

	Retail Price	Wholesale Prices		
		1	5 or More	25 or More
Barr's White—Purplish black spots .....	1.00	.75	.60	.50
Beauty of Livermore—Bright crim., very lg..	.75	.50	.50	.45
Bracteatum—Fiery scarlet .....	.75	.35	.25	
Cavalier—Scarlet red. Crinkly flowers .....	.75	.50	.50	
Cerise Beauty—Large, Cerise pink .....	.75	.50	.50	
Curtis Flame—Ex. large flame-red blooms..	1.00	.65	.60	
Curtis Flesh—Pink-flesh-pink with lavender	1.00	.65	.60	
Curtis Mulberry—Large 8" mulberry flowers	1.00	.65	.60	
Curtis Salmon Pink—Salmon pink .....	1.00	.65	.60	
Edna Perry—Light pink .....	.75	.50	.50	
Enchantress—Soft lilac rose .....	1.00	.50	.50	
Gold of Ophir—Golden Orange. 26" .....	1.00	.50	.50	
Helen Elizabeth—Pink. No dark spots .....	1.00	.50	.50	
Henri Cayeux—Old rose, unusual color .....	1.00	.50	.50	.45
Jeanne Mawson—Geranium pk. Erect grower	.75	.50	.50	
Joyce—Cerise and old rose .....	.75	.50	.50	
Mahoney—Large dark red; scarce .....	.75	.60	.50	
May Sadler—Salmon pink. Free bloomer .....	.75	.50	.50	
Mrs. Perry—Salmon pink, free flowering .....	.75	.50	.50	.45
Olympia—Double flame scarlet .....	.75	.50	.50	
Orange Perfection—Strong grower with orange tinted flame red .....	.75	.50	.50	
Orientele—Crimson scarlet. Large black blot	.75	.50	.50	
Perry's White—Good size, blue black blot .....	1.00	.75	.60	.50
Pink Radiance—Radiant pink; 30" .....	.75	.50	.50	
Prosperine—Chinese red, immense flowers .....	.75	.50	.50	
Purity—Soft pink. No markings .....	1.00	.50	.50	
Salmon Glow—Double salmon orange. Erect	.75	.50	.50	
Sass Pink—Pink. Large crepy texture petals	1.00	.50	.50	
Trilby—Large red, late, outstanding .....	1.50	.85	.75	
Watermelon—Huge watermelon-pink flowers	1.00	.65	.65	
Wunderkind—Finest cerise .....	1.00	.65	.60	
Wurtembergia—Very large, red, good .....	.75	.50	.50	.50

# PLANT A SHOW GARDEN

## *for easy profits*

NO FLOWER WE KNOW  
WILL ATTRACT THE FLOWER LOVER  
AS DO PEONIES

We have hundreds who come every year from  
**100, 200 and 300 MILES**

### NO WORK

only some roadside space where you may plant  
**75 to 250 Eye Catching Peonies**  
and you will have the visitors.

HAVE A LITTLE SHOW IN YOUR HOME, GARAGE,  
OR WHEREVER YOUR VISITORS CAN SEE AND  
EXAMINE THEM AT LEISURE, AND  
THEY WILL SOON SAY,

*"I would like some of that and the other,"*  
and you will have a fine sized order —

**Maybe \$5.00, maybe \$50.00, possibly over \$100.00**

MAKE IT A POINT TO COME TO OUR PLANTING  
DURING BLOOMING TIME

**EARLY JUNE IS BEST**

## PEONIES

25 at 100 Rate. 5 at 10 Rate.

All Three-Year Stock — 3-5 Eyes

	Retail Price	Wholesale Prices		
		1	5-10	25 or More
A. B. Franklin (Fra) White opening blush	3.50	2.50	2.25	
Addielanchea (Bra) Creamy white	1.00	.65	.50	
Adolphe Rousseau (Des) Deep garnet	1.00	.75	.75	
Aksarben (Rose) Brilliant dark crimson	1.00	.75	.75	
Albert Crousse (Cr) Salmon pink, late	1.25	.60	.50	
Alesia—Creamy white	5.00	3.50	3.50	
Alice Balfour (Kel) Delicate rose pink	1.00	.50	.50	
Alice Harding (Lem) Cream white, good	2.00	1.00	.85	
Allure—White. Loosely built	3.50	2.50		
Alpheus Hyatt (Rich) Rose pink, late	1.00	.50	.50	
Alsace Lorraine (Lem) Creamy white, late	1.00	.50	.45	.40
A. P. Saunders (Thur) Flesh white, late	2.00	1.00	.85	
Archie Brand (Bra) Shell pink	1.00	.50	.50	
Argentine (Lem) LM. Purest white, fragrant	2.50	1.50	1.25	
Arlequin (Des) Large pale rose pink	1.00	.50	.50	
Armançe Dessert (Dor) Soft, silv. sal. pink	1.25	.75	.60	
Asa Gray (Cr) Pale lilac dotted	1.00	.50	.50	
Auguste Dessert (Des) Crim., Silver edge	1.25	.65	.60	.55
Auguste Villaume (Cro) Rose, late	1.00	.50	.50	
Augustin D'Hour—Solferino red	1.00	.60	.50	
Avalanche (Cr) Cream white	1.00	.60	.55	
Ball o' Cotton (Fra) Pure white	1.00	.60	.55	
Baroness Schroeder (Kel) Flesh white, good	1.00	.60	.55	.50
Bayadere (Lem) Cream white	1.00	.50	.45	
B. B. Wright (Wri) Beautiful pink	2.00	1.00	.75	
Ben Franklin (Bra) Dark crimson, tall	1.00	.75	.75	
Benoit—Dark red, late	1.50	.75	.75	
Betty Blossom (Thur) Soft yellow effect	2.00	1.25	1.00	
Bishop Burke (Vor) Crimson	1.50	.85	.75	
Blanche King (Bra) Deep pink	3.50	2.50	2.00	
Blushing Beauty (Frank) Pale pink	1.50	.85	.65	
Canari—Creamy yellow	1.00	.50	.50	
Candeur (Des) Silvery pink	1.00	.50	.40	
Charles McKellip (Bra) Rich, ruby-crimson	1.25	.75	.65	
Charlot (Dor) Silvery white, early	1.50	.75	.75	
Cherry Hill (Thur) Deep garnet, early, tall	1.25	.75	.75	
Chestine Gowdy (Bra) Shell pink	1.00	.50	.45	
Chief (Fra) Light pink, very large	3.00	2.00		
Claire Dubois (Cr) Satin pink, large, late	1.00	.50	.45	
Clara Anderson (And.-Hol) White gold stam.	1.00	.50	.45	
Col. Chas. A. Lindbergh (Kund) Early red	1.25	.75	.75	
Coral Queen (H. Sass) Bluish-pink, late	3.00	2.00		
Cornelia Shaylor (Shay) Shell pink, late	1.25	.60	.50	.40
Coronation (Kel) Light pink, white center	1.00	.50	.45	.35
Couronne d'Or (Cal) Milk white, late	1.00	.50	.40	.35
Crystola (And) Pure crystal white	2.00	1.00	1.00	
C. W. Shock (Frank) Red, midseason	1.00	.75	.75	
Daniel Boone—Tall deep red, very stiff stems	1.50	1.00	.85	
David (Kel) Coral pink	1.00	.50	.45	.40
David Harum (Bra) Bright red, good	1.50	.75	.75	
Denise (Lem) White flecked crimson	2.50	1.00	.85	
Denis Debatene (Dor) Salmon pink	1.50	.75	.65	
Desire (Bra) Delicate mauve	1.00	.50	.50	
Doris Shaylor (Shay) Fine pink	1.25	.65	.60	
Dorothy J. (Jones) Tall rich cream, silver, M	15.00	10.00	10.00	
Dr. J. H. Neeley, (G & R) Lg. tall white	4.00	2.50	2.50	
Duchess of Albany—Rose pink, rose type, g.	1.00	.50	.50	
Duchesse de Nemours (Cal) White	1.60	.50	.45	.40
Dr. Ruth (Frank) Pure white, late	2.00	1.00	.75	.60
E. C. Shaw (Thur) Clear Rose, frag., late	1.50	.75	.75	
Edith M. Snook (Snook) Flesh pink, late	7.50	4.00	3.00	

	Retail Price	Wholesale Prices		
		1	5-10	25 or More
<b>Edulis Superba</b> (Lem) Dark pink .....	1.00	.50	.45	.40
<b>Elisa</b> (Des) Hydrangea pink .....	1.00	.60	.50	.50
<b>Eliz. B. Browning</b> (Bra) Pure white .....	1.50	.75	.75	
<b>Ella Christiansen</b> (Bra) Deep pink .....	3.00	2.00	1.75	
<b>Elsa Sass</b> (Sass) Full rose type white, tall, .....	5.00	3.50	2.50	
<b>Elwood Pleas</b> (Pleas) Light rose pink .....	1.00	.50	.40	.35
<b>Enchanteresse</b> (Lem) Cream white, late .....	1.25	.75	.50	
<b>Estafette</b> (Des) Crim., silvery margin, early .....	1.50	.75	.75	
<b>Etta</b> (Ter) Deep shell pink, very late .....	1.00	.50	.50	
<b>Eugene Verdier</b> (Cal) Pale Hydrangea pink .....	1.00	.50	.50	
<b>Eugenie Verdier</b> (Cal) Hydrangea pink .....	1.00	.50	.45	.40
<b>Evangeline</b> (Lem) Compact pale pink, late .....	1.00	.50	.45	.40
<b>Evening Glow</b> (Hol) Lilac, late, tall .....	1.00	.60	.50	.45
<b>Evening Star</b> —White with red edgings .....	5.00	3.00	3.00	
<b>Exquisite</b> (Kel) Rosy pink, frag., tall .....	1.00	.50	.45	
<b>Fairvette</b> —White streaked red .....	1.00	.50	.50	
<b>Fannie Lee</b> (Vor) American Beauty red .....	2.00	.75	.75	
<b>Fanny Crosby</b> (Bra) Yellow .....	1.50	.75	.75	
<b>Faustine</b> (Lem) Pale pink .....	1.00	.50	.40	.35
<b>Felix Crousse</b> (Cr) Brilliant red .....	1.00	.50	.50	.50
<b>Festiva Maxima</b> (Miel) Large fine white .....	1.00	.50	.50	.50
<b>Flamingo</b> (And) Light pink, early .....	2.00	1.00	1.00	
<b>Florence Macbeth</b> (Sass) Large light pink .....	1.50	.75	.60	.50
<b>Floweret of Eden</b> (Neeley) Mauve pink .....	1.00	.50	.45	.40
<b>Flower Girl</b> (Aut) White tinted pink .....	5.00	3.50		
<b>Fragrans</b> —Very late rose .....	1.00	.50	.40	.40
<b>Frances Shaylor</b> (Shay) White and gold effect .....	1.00	.50	.45	
<b>Frances Willard</b> (Bra) Blush white .....	1.00	.60	.55	.50
<b>Francois Rousseau</b> (Des) Dark red, early .....	1.50	.75	.75	
<b>Frankie Curtis</b> (Vor) A white M. Jules Elie .....	2.50	1.50	1.25	
<b>Franklin's Pride</b> (Frank) Pink, frag. ....	2.50	1.75	1.50	
<b>Fulgida</b> —Rose magenta .....	1.00	.50	.50	
<b>Galathee</b> (Lem) Flesh white .....	1.00	.50	.50	
<b>Garden Princess</b> (Nee) Iv. pink, very distinct .....	1.50	.75	.65	
<b>Gene Str. Porter</b> (Ros) White, bird nest form .....	1.00	.50	.50	.40
<b>Georgiana Shaylor</b> (Shay) Rose pink, large .....	1.25	.65	.60	
<b>Germaine Bigot</b> (Des) Pale lilac rose .....	1.00	.50	.45	.40
<b>Gilbert Barthelot</b> (Dor) Silvery pink .....	1.50	.75	.60	.50
<b>Gilberte</b> (Lem) Pink, late .....	1.50	.75	.75	
<b>Ginette</b> (Des) Flesh pink, dwarf .....	1.00	.50	.50	
<b>Gismonda</b> (Cr) Flesh colored, late .....	1.00	.50	.45	.35
<b>Gloriana</b> (Neeley) Large, pink .....	1.50	.75	.75	
<b>Glorious</b> (New) Lt. pink shading to white .....	1.00	.50	.50	
<b>Golden Dawn</b> (Gumm) White, frag. ....	2.00	1.00	1.00	
<b>Good's Dream</b> (G & W) White, midseason .....	3.50	1.75	1.50	
<b>Gov. Fuller</b> (Thur.) Fresh shell-pink, fragrant, late. ....	3.50	2.00		
<b>Grace Batson</b> (Sass) Deep pink bomb .....	1.50	1.00	1.00	
<b>Grace Loomis</b> (Saund) White, late, tall .....	2.00	1.00	1.00	
<b>Grandiflora</b> (Rich) Silvery pink .....	1.00	.60	.50	.50
<b>Gretchen</b> —Light pink .....	1.00	.50	.50	
<b>Grover Cleveland</b> (Ter) Dark crimson, good .....	1.00	.65	.65	.60
<b>H. A Hagen</b> (Rich) Deep rose pink, late .....	1.00	.60	.50	
<b>Hansina Brand</b> (Bra) Pink, prize winner .....	3.50	2.50	2.00	
<b>Hans Peter Sass</b> (Sass) Blush wh., very good .....	5.00	2.50	2.50	
<b>Harriet Farnsley</b> (Bra) Dark crimson .....	1.00	.65	.65	
<b>Harry L. Burden</b> (Nee) Delicate pink, large .....	2.50	1.00	1.00	
<b>Harry F. Little</b> (Nich) Tinted wh., fra., lg. ....	5.00	3.50	3.00	
<b>Hazel Kinney</b> (Bra) Clear hyd., pk, rose type .....	1.00	.60	.55	.50
<b>Helen Wolaver</b> (Bra) Sea shell pink .....	1.00	.50	.40	.35
<b>Henri Cori</b> (Dor) Flesh pink .....	1.00	.50	.50	
<b>Henry Avery</b> (Bra) White with yellow collar .....	1.00	.60	.55	
<b>Henry Webster</b> (Frk) Large red, late .....	3.00	1.50	1.25	
<b>Hermione</b> (Sass) Light pink, tall, large, late .....	1.50	.75	.75	

	Retail Price	Wholesale Prices		
		1	5-10	25 or More
Hespanola (And) Shell pink .....	2.00	1.00	1.00	
H. F. Reddick (Bra) Bright dark crimson .....	1.00	.65	.60	
Hiawatha (Fra.) Very large dark red. L. 36" .....	3.00	2.00	2.00	
Ideal (Fran.) Very large, full rose type .....	3.00	2.00	2.00	
Ingenieur Doriat (Dor) Car. red, strong stems .....	2.50	1.00	1.00	
Inspecteur Lavergne (Dor) Fine new red .....	1.50	.85	.75	
Jacques Doriat .....	2.00	1.00	1.00	
James Boyd (Thur) Flesh changing white .....	1.00	.50	.45	.40
James Kelway (Kel) Rose white, early, frag. ....	1.00	.50	.50	
James R. Mann (Thur) Rosy pink .....	1.00	.60	.50	
Jean Harlow (Wright) White .....	7.50	3.50	3.00	
Jennot (Des) Flesh pink, extra fine, late .....	1.25	.60	.50	.40
Jenny Lind (Barr) Pink .....	1.00	.50	.40	
Jessie Shaylor (Thur) Deep cream .....	1.00	.60	.50	.40
John M. Good (G & W) White, rose type .....	1.25	.65	.55	.50
Jubilee (Pleas) Flesh white, fine, early .....	1.00	.60	.50	
Judge Berry (Bra) Delicate pink, early .....	1.00	.60	.55	.50
Judge Snook (G & R) Cream white, large.....	5.00	3.50	3.50	
Judy Becker (Sass) Bril. dk. red, large, tall .....	5.00	3.50		
June Brilliant (Aut) Brilliant red, late .....	3.00	2.00		
June Day (Fra) Light flesh edged lavender .....	1.50	1.00		
Karl Rosenfield (Ros) Dark crimson, good .....	1.00	.60	.55	.50
Katherine Havemeyer (Thur) Flesh pink .....	1.00	.75	.60	.40
Kelway's Glorious (Kel) Creamy white, frag. ....	3.00	1.50	1.25	1.25
Kelway's Queen (Kel) True, pink, frag. ....	2.00	1.00	1.00	
Kundred's Jubilee (Kund) White .....	1.00	.50	.50	
Lady Alex. Duff (Kel) Pale pink, fine .....	1.00	.60	.50	
Lady Kate (Vories) Very late blooming pink .....	2.00	1.00	.85	
Lafayette (Dess.) Lovely salmon pink, Large .....	1.50	.75	.60	
La Fee (Lem) Rose pink, frag., early .....	1.50	.75	.75	
La France (Lem) Violet rose pink, late .....	1.25	.75	.65	
Lake 'o Silver (Fra) Light pink, silver tipped .....	1.50	.85		
La Lorraine (Lem) Cream white, late .....	2.00	.75	.65	
La Perle (Cr) Soft pink, cup shaped .....	1.00	.50	.40	
La Rosiere (Cr) Cream white .....	1.00	.50	.50	
Last Rose (Sass) Deep pink, very late .....	1.50	.85	.85	
La Tulipe (Cal) Lilac white .....	1.00	.50	.50	
Laura Dessert (Des) Canary yellow .....	1.50	.85	.75	
Laura Vories (Vor) Flesh white, pk. center .....	3.00	2.00		
Le Cygne (Lem) Milk white, early, the finest .....	3.00	2.00	1.75	
Libelleule (Des) Flesh marked crimson .....	1.00	.50	.50	
Lillian Gumm (Gumm) shell pink .....	1.00	.60	.50	
Livingstone (Cr) Lilac rose .....	1.00	.50	.45	.40
Longfellow (Bra) Cherry red, good, mid-seas. ....	2.00	.75	.75	.65
Lora Dexheimer (Bra) Crimson, rich quality .....	1.25	.75	.65	.60
Lorch (G & K) Cream white, extra fine .....	1.00	.50	.50	.45
Lord Kitchner (Ren) Very early, red .....	1.00	.65	.60	
Loren Franklin (Frank) Dark pink, late .....	3.00	2.00	2.00	
Lucky Strike (Wright) New double pink .....	1.50	.85	.75	
Loveliness (Hol) Hydrangea pink .....	1.00	.60	.60	
Lucile Hartman (Frank) Light pink .....	2.50	1.50	1.50	
Lucy E. Hollis (Hol.) Pink .....	1.00	.50	.50	
Lucy Shaylor (Shay) Creamy yellow center .....	2.00	.75	.75	
Luetta Pfeiffer (Bra) Hydrangea pink, early .....	1.25	.65	.55	
Luxor (Sass) White Mons. J. Elie .....	5.00	2.50	2.50	
Mabel L. Franklin (Fra) Light pink .....	1.25	.75	.65	
Madelon (Des) Silvery pink, new .....	1.00	.60	.50	.40
Madonna (Nee) Cream white, loosely built.....	3.00	2.00	2.00	
Magnificent (Bra) Dark red, tall, early .....	1.25	.75	.75	
Manitou (And) Blush, rose fragrance .....	1.50	.75	.75	
Marcheal Vaillant—Large red, huge, late .....	1.00	.60	.50	
Margaret Eliott Waggaman (Dor) Sal., tall.. ..	1.50	.75	.60	
Margaret Vierheller (Wett) White .....	1.00	.50	.50	
Marguerite Gerard (Cr) Flesh pink .....	1.00	.50	.45	.40
Marie Crousse (Cr) Shell pink, fine .....	1.00	.50	.50	
Marie Jacquin (Vor) White water lily .....	1.00	.50	.50	

	Retail Price	Wholesale Prices		
		1	5-10	25 or More
Martha Bulloch (Bra) Rose pink, large, late	1.50	.75	.65	.60
Marvel (Secor) Fine large pink	1.50	.75	.75	
Mary Auten (Aut) White with pink tints, L.	2.50	1.50		
Mary Brand (Bra) Deep red, silky	1.50	.75	.75	.65
Mary A. Livermore (Hol) Lilac pink	1.00	.50	.50	
Mary Wood. Shaylor (Shay) Clr. pink, dwarf	1.00	.60	.50	
Matchless Beauty (Nee) Cream white, good	2.50	1.50	1.50	
Matilda Lewis (Saun) Red, fine	3.00	2.00	2.00	
Maud L. Richardson (Hol) Lilac rose, tall	1.00	.50	.50	
Mignon (Lem) Amber white, dwarf	1.00	.50	.50	
Milton Hill (Rich) Salmon pink, late	1.00	.50	.50	.40
Minerva (Sass) Blush pink, strong stems	1.50	.75	.75	
Minnie Shaylor (Shav) Semi-double white	2.00	1.25	1.25	
Minuet (Fra.) Very large light pink, late	3.00	2.00	1.75	
Miriam (Chase) Rich pink	1.00	.60	.55	
Miss Henninger (Terry) White	1.00	.50	.50	
Miss Minneapolis (Frank) Pale pink	2.00	1.00	1.00	
Mlle. Jeanne Riviere (Rivi) Rose	1.50	.75	.75	
Mme. Auguste Dessert (Des.) Rose, beautiful form	1.50	.75	.75	
Mme. Calot (Miel) Flesh	1.00	.50	.50	
Mme. Claude Tain (Dor) Fine white	1.50	.75	.60	
Mme. de Treyeran (Des) Flesh white	1.00	.50	.40	
Mme. de Verneville (Cr) Blush white	1.00	.50	.50	.40
Mme. Ducl (Mech) Soft pink bomb	1.00	.50	.40	.35
Mme. Edouard Dorlat (Dor) White, fine	1.50	.75	.65	
Mme. Emile Dupraz (Rivi) Old Rose-pink, fragrant	1.00	.50	.45	.40
Mme. Emile Galle (Cr) Lilac white	1.00	.50	.50	
Mme. Emile Lemoine (Lem) Milk white	1.00	.50	.50	
Mme. Escary (Lem) Creamy white	2.50	1.00	1.00	
Mme. Gaudichau (Mil) Dark crimson	1.50	.85	.75	
Mme. Geissler (Cr) Rose pink	1.00	.50	.50	.50
Mme. Jules Dessert (Des) Cream white	1.00	.65	.55	.50
Modele De Perfection (Cro) Old rose, late	1.00	.50	.50	.40
Modella (Bet) Light pink, med. tall	1.00	.50	.45	.40
Modeste Guerin (Gue) Rose pink, early	1.00	.50	.50	.40
Mons. Dupont (Cal) Milk white	1.00	.50	.50	
Mons. Jules Elie (Cr) Deep pink, very large	1.00	.65	.60	.55
Mons. Martin Cahuzac (Des) Dark garnet	2.00	1.25	1.25	
Mont Blanc (Lem) Milk white	1.00	.50	.50	
Montrose (And) Large deep rose comb	1.50	.75	.60	
Mr. L. Van Leeuwen (Niew) Dark pink	2.00	1.25	1.25	1.10
Mrs. A. B. Franklin (Frank) Pure white	2.50	1.75	1.50	
Mrs. A. G. Ruggles (Bra) Light pink	1.00	.50	.50	
Mrs. A. M. Brand (Bra) Purest white	2.50	1.75	1.50	
Mrs. C. S. Minot (Min) Shell pink and white	1.50	.75	.75	
Mrs. Deane Funk (Bra) Good pink	2.00	1.25	1.00	
Mrs. Ed Harding (Shay) Pure white, early	1.50	.65	.55	.45
Mrs. F. D. Roosevelt—Rose type; medium	5.00	3.50		
Mrs. Frank Beach—Fine large white	2.50	1.50	1.50	
Mrs. Geo. Bunyard (Kel) Lilac rose	1.50	1.00	1.00	
Mrs. Geo. Rawson (S & A) Fine, lt. pink, late	1.50	.75	.60	
Mrs. H. F. Little—Bluish, large, late	7.50	5.00		
Mrs. John M. Good (G & W) White	1.50	.75	.60	.50
Mrs. John M. Kleitsch (Bra) Light violet rose	2.50	1.50	1.25	
Mrs. John M. Lewis (Lew) Rich med. red	2.00	.75	.75	
Mrs. J. V. Edlund—Largest white, fra., tall	3.50	2.50	2.00	
Mrs. Liv. Ferrand (Nich.) True salmon-pink	12.50	10.00		
Mrs. M. P. Clough (Shav) Salmon and white	1.00	.65	.60	
Mrs. R. M. Bachellor (Vor) White	5.00	3.50	3.00	
Mrs. Romaine B. Ware (Bra) Lt. fl. pink, tall	1.50	.75	.65	
Mrs. W. A. Rafferty—Tall rose pink	3.50	2.50	2.25	
Mrs. Shaylor Force (Shav) White	1.00	.60	.55	
Mrs. Springer Brooks (Edl) Wh., midseason	5.00	3.50	3.00	
Mrs. Ward Welch—White	3.50	2.00	2.00	

	Retail Price	Wholesale Prices		
		1	5-10	25 or More
Mrs. W. D. Bennett (Wett) Pink, late .....	1.50	.75	.75	
Myrtle Gentry (Bra) Blush white, late .....	2.00	1.00	.85	.75
Nancy Dolman (Vor) Pink, tall, large .....	1.50	.75	.60	.50
Nanette (Dor) Cream white .....	1.50	.75	.60	.50
Nell Shaylor (Shay) White and gold .....	1.50	.75	.65	
New Era (Franklin) Pure white Mons. Jules Elie .....	2.50	1.50		
Nick Shaylor (S & A) Solange color .....	4.00	2.00	1.75	
Nimbus (And) Tall, white, rose type .....	1.25	.65	.60	.55
Nina Secor (Sec) Pure white .....	1.50	.75	.65	
Ninom (Dor) Soft flesh .....	1.00	.50	.45	.40
Nobility (Van Leeu) Bright pink .....	1.50	.75	.65	.55
Nymphaea (Thur) Creamy white, yel. stamens .....	1.00	.65	.50	
Octavie Demay (Cal) Pink, fragrant .....	1.06	.50	.40	.40
Odile (Dor) Flesh pink, fine .....	2.00	1.25	1.00	
Old Silver Tip (Bra) Deep rose red .....	1.00	.65	.65	
Onondaga (Little) New tall red .....	5.00	3.50	3.50	
Opal (Pleas) Opalescent tints .....	1.00	.50	.50	.40
Opal Iris (Pleas) Large light pink .....	1.00	.50	.50	
Pallas (Ter) Semi-rose, early pink .....	1.00	.50	.45	
Paradise (Hol) Hydrangea pink .....	1.00	.50	.45	.40
Pasteur (Cr) Pink, nearly white .....	1.00	.50	.45	
Perrette (Des) White, tinged flesh .....	1.00	.50	.40	
Peter Pan (Hol) Lilac rose .....	1.00	.50	.50	
Philippe Rivoire (Riv) Dark crimson, frag. .....	3.00	1.50	1.50	1.50
Philomele (Cal) Pink and yellow .....	1.00	.50	.50	
Phoebe Cary (Bra) Lavender pink, late .....	1.00	.65	.65	
Phyllis Kelway (Kel) Bright pink, lrg., frag. .....	1.50	.75	.60	.50
Pierre Duchartre (Cr) lilac pink .....	1.00	.60	.50	
Pink Opal—Light pink, late .....	1.50	.75	.65	.50
Pitti Sinn (Vories) Pink, strong plant .....	1.00	.50	.50	
Pleiades .....	3.00	2.00	2.00	
Pomponette (Des) Pink and silver .....	1.00	.50	.50	
Prairie King—Brilliant, light crimson, shaded purple .....	1.50	.85		
Pres. Roosevelt (Warn.) Good medium red. Midseason .....	1.50	.75	.75	
Pres. F. D. Roosevelt—Large rose type; dark pink; tall .....	3.50	2.50		
Pres. Taft (Cal) Delicate pink .....	1.00	.60	.55	.50
Pres. Wilson (Thur) Rose pink, frag. .....	2.00	1.00	1.00	
Pride of Essex (Thur) Flesh pink .....	1.25	.75	.65	.50
Pride of Paulding (Neeley) Rich flesh pink .....	1.00	.50	.40	.35
Primevere (Lem) Sulphur yellow, lovely .....	1.50	.75	.75	
Prince of Darkness—Dp. red, early, fragrant .....	1.00	.65	.65	
Priscilla Alden (Rob) Warm white, early .....	1.50	.75	.60	.50
Prof. C. Potrat (Dor) Cherry pink, tall, late .....	1.50	.75	.75	
Queen of Hamburg (Sass) Full, bright, gleaming pink .....	3.00	2.00	1.75	
Ralph (Pleas) Bright pink, very late .....	1.00	.50	.50	
Raoul Dessert (Des) Mauve, shaded pink .....	1.00	.60	.50	.40
Reine Hortense (Cal) Delicate pink, fine .....	1.00	.60	.55	.50
Reine Baronet (Mil) Tyrian pink .....	1.00	.50	.40	
Renee Marie (Des) Soft pink to white .....	1.00	.50	.50	
Rev. H. N. Tragitt (Bra) White .....	3.00	2.00	1.75	
Richard Carvel (Bra) Brilliant crimson .....	1.25	.75	.75	
Rita (Des) Flesh salmon pink .....	1.00	.50	.50	
Rosa Bonheur (Des.) Soft flesh pink. Late .....	1.00	.60	.50	
Rosabel—Midseason. Large perfect flowers of rose-red .....	1.00	.75	.75	
Rose Shaylor (Shay) Flushed white, fine .....	2.00	.75	.75	
Rosette (Des) Silvery flesh .....	1.00	.65	.60	
Rosine (Lem) Late, pale lilac .....	1.50	.50	.50	
Ruth Brand (Bra) Lavender pink .....	1.00	.50	.50	
Samuel Hughes (Kel) Deep amaranth .....	1.00	.50	.50	
Sarah Bernhardt (Lem) Apple blossom pink .....	1.00	.60	.55	.50

	Retail Price	Wholesale Prices		
		1	5-10	25 or More
Sarah K. Thurlow (Thur) Large white, late	1.25	.65	.55	.45
Shawnee Chief (Bigger) Dark brilliant red.				
New .....	3.00	2.00	1.75	
Shaylor's Dream (Shay) Flesh .....	1.00	.50	.50	
Sylvia Saunders (Saunders) Bright clear pink, center filled with yellow stamens .....	2.50	1.50	1.50	1.25
Solange (Lem) Cream, coffee color, late .....	1.00	.60	.50	.35
Sops of Wine (Secor) Dark red .....	1.50	.75	.65	
Souv. de A. Millet (Mil) Amaranth red .....	1.50	.75	.65	.60
Souv. de Francois Ruitton—Pink .....	1.00	.50	.50	
Souv. de Gen Gallieni (Riv) Pink .....	1.00	.60	.50	
Souv. de Louis Bigot (Des) Bengal rose .....	1.50	.75	.65	.60
Stephanie (Ter) Delicate pink .....	1.00	.50	.50	
Strassburg (G & K) Silvery lilac rose .....	1.50	.75	.75	
Supreme (Hol) Pink, late .....	1.00	.50	.40	
Suzette (Des) Bengal rose, good gard. effect	1.00	.50	.50	
Sylvia Louise (Saun) Tyrian purple .....	1.50	.75	.75	
Tanager (Sass) Red, midseason .....	1.50	.75	.75	
Tempest (Auten) Brilliant clear dark red.				
Color holds .....	3.50	2.50	2.00	
The Disc (Sass) Red, late .....	1.50	.75	.75	
Therese (Des) Soft pink, the best pink .....	2.00	1.00	.90	.80
Thos. C. Thurlow (Thur) Salmon flesh .....	1.50	.75	.75	
Tourangelle (Des) Flesh pink .....	1.00	.60	.50	.40
Trail's End (Neely) Soft pink .....	2.50	1.00	.85	
Umbelletta Rosea (Des) Pink, early .....	1.00	.50	.40	
Vaughan Torrey—Similar to Solange; erect	2.50	1.25	1.00	
Venus (Kel) Delicate shell pink .....	1.00	.50	.45	
Victor's Crown (Nee) Pink, midseason .....	2.00	1.00	.75	
Victory Chateau Thierry (Bra) Bright pink...	3.50	2.00	1.75	
Victoire de la Marne (Des) Amaranth .....	1.50	.75	.70	.65
Walter Faxon (Rich) Salmon rose .....	1.50	.75	.65	.60
Wiesbaden (G & K) Deep pink .....	1.00	.50	.50	
W. E. Blanchette (Bra.) Very large red .....	12.50	10.00		
W. F. Christman—Flesh white .....	1.00	.50	.50	.40
W. F. Turner (Shay) Dark crimson .....	1.50	1.00	.90	
Wilton Lockwood (Thur) Rose pink .....	1.50	.75	.75	
W. L. Gumm (Gumm) White, late .....	5.00	2.50	2.50	
Yukon (Aut) Large, flat white .....	3.00	2.00		
Zest (Hol) Pink .....	1.00	.50	.50	

## JAPANESE PEONIES

	Retail Price	Wholesale Prices		
		1	5-10	25 or More
Akalu (Des) Carmine red .....	1.00	.50	.50	
Akashigata (Des) Rose .....	1.50	.75	.65	.55
Alma (Shay) Light pink .....	1.00	.50	.50	
Altar Candles (Pleas) Delicate pink .....	1.00	.60	.50	
Ama-No-Sode—Light rose pink .....	3.00	2.00	2.00	
Antwerpen—Carmine pink .....	2.50	1.25	1.00	
Apple Blossom—Flesh pink .....	1.50	.75	.75	
Attraction (Hol) Tyrian rose .....	1.00	.50	.50	.50
Aureolin (Shay) Pink guards, yel. cen.....	1.25	.65	.60	
Cascade—White, midseason .....	1.00	.50	.50	
Cathedral—Deep pink guards .....	1.50	.75	.65	
Charm (Frank) Dk red, tall, strong .....	3.00	1.75	1.75	
Constance (Bern) Pink, yellow center .....	2.00	1.00	.85	
Dawn (Cal) Pink .....	1.00	.60	.50	
Diadem (Fra) Dark red .....	2.50	1.50	1.50	



	Retail Price	Wholesale Prices		
		1	5-10	25 or More
Dog Rose (Kel) Delicate pink .....	1.50	.75	.75	
Eva—Light lilac crimson .....	2.00	.75	.75	
Exquisite First—White, good .....	1.50	.75	.75	
Fairy—Light pink, fine .....	1.50	.75	.75	
Flashlight (Hol) Tyrian rose .....	1.00	.60	.50	
Fugi-No-Mine—Pure milk white .....	1.50	1.00	1.00	
Fuyajo—Velvety mahogany .....	1.25	.75	.75	
Ginko-Nishiki (Des) Streaked crimson .....	1.50	.75	.75	
Glory (Hol) Light tyrian rose .....	1.00	.50	.50	.40
Goddess (Kel) Rose pink self .....	3.00	1.50	1.50	
Golden Nugget (Pleas) Rosy lilac .....	1.00	.50	.50	
Gold Mine (Hol) Tyrian rose .....	1.00	.50	.50	.45
Gypsy (Hol) Wine red, med. ....	1.50	.75	.75	
Hakodate (Mil) Large pure white .....	5.00	2.50	2.50	
Hari-Ai-Nin (Bab) Maroon .....	2.00	1.25	1.00	
Hatsugi—Dark red .....	1.00	.50	.50	.45
Henri Potin (Dor) China pink .....	1.00	.50	.50	
Ho-Gioku—White .....	1.00	.50	.50	
Innocence (Hol) Lilac rose .....	1.00	.50	.50	.45
Isani-Gidui—Pure white, exquisite .....	5.00	2.50	2.50	
Instituteur Doriat (Doriat) A fine red, tipped white .....	1.50	1.00	.85	
Joseph Plagne (Dor) Carmine red .....	1.50	.75	.65	.50
Kameno-Kerogama—Clear red .....	1.00	.65	.50	
King of England (Kel) Rich carmine .....	1.50	.75	.75	
Kino-Kimo—Crimson-carmine .....	1.50	.75	.75	
Knight of the Thistle (Kel) Crimson .....	1.50	.75	.75	
Kukeni-Jishi (Des) Silvery pink .....	5.00	2.50	2.50	
Kumagoe—Crimson pink .....	1.00	.50	.50	
Lotus—Beautiful pale pink .....	1.50	.65	.60	
Lou Shenk (Ros) Attractive pink .....	1.00	.50	.50	
Margaret Atwood—White, extra fine .....	3.00	1.50	1.50	
Melody (Aut) Pink, yellow center .....	1.00	.50	.50	
Mikado—Dark crimson, extra fine .....	1.00	.60	.55	.55
Minamota—Purple red, fine .....	1.50	.75	.75	
Monterey (Aut) Salmon pink .....	2.00	1.00	1.00	
Moon-Yen-Claire (Pleas) Rose pink .....	1.00	.50	.50	
Mr. G. F. Hemerick—Fine rose pink .....	2.00	1.00	.85	
Mrs. Mac (Fra) Pink, flecked .....	1.50	.75	.75	
Nippon Beauty (Aut) Dark red, the best .....	2.00	1.00	.85	.75
Nippon Brilliant (Aut) Red, very attractive .....	3.50	2.50	2.50	
Nippon Gold (Auten) Deep pink .....	2.00	1.25	1.25	
Noon Day—Rose, very attractive .....	2.00	1.00	1.00	
Nymphe (Des) Pink .....	1.00	.50	.50	
O'Fugi—Flesh guard petals .....	1.00	.50	.50	
Oki No-Nami—Hydrangea pink .....	1.00	.50	.45	.40
Ohanagassa—Red tinted rose .....	1.50	.75	.75	
Ohirama—Carmine tinged purple .....	1.00	.75	.65	
Onahama (Gumm) Dark rich red .....	1.50	.85	.75	
Oriental Pearl (Wri) Light rose pink .....	2.00	1.25	1.00	
Ostrich Plume (Pleas) White guards .....	1.00	.50	.50	
Petite Renée (Des) Carmine pink .....	1.00	.50	.50	
Ping Wing—Pink, medium height .....	1.00	.50	.50	
Polar Star—White and yellow. Very large ..	3.00	2.00		
Prairie Afire (Brand) Pink .....	3.50	2.50	2.00	
Princess Duleep Singh (Kel) Rose pink .....	3.00	1.50	1.50	
Rabelais (Des) Pink .....	1.50	.75	.75	
Rashooman—Crimson guards, good .....	1.25	.75	.75	.65
Rigolette (Dor) Broad pur. crim. petals .....	2.50	1.00	1.00	
Rose of Nippon—Deep rose, different .....	1.50	.75	.75	
Rose Valley (Scott) Pink, hon. men .....	3.50	2.50	2.00	
Ruigegno—Rich dark maroon .....	1.50	.75	.75	
Sagoroma (Mil) Salmon guards .....	1.00	.50	.50	
Seiriu Somae—White and sulphur .....	1.00	.50	.45	.40

	Retail Price	Wholesale Prices		
		1	5-10	25 or More
Shawano (And) clear rose pink .....	3.00	1.50	1.50	
Shiro-Sangai—White guards, lovely .....	1.50	.50	.45	.40
Shy Maid (Aut) Lavender pink .....	1.00	.50	.45	.40
Silver Plume (And) Silvery pink .....	1.50	.75	.75	
Snow Wheel—White, very popular .....	1.50	1.00		
Sochi (Mil) Deep rose .....	2.00	1.00	1.00	
Soma Ganoka—Dark red guards, good .....	1.50	.75	.75	
Sunburst (Shay) Wh., beautiful, frag. ....	3.50	2.50		
Sunrise (Fra) Pink, yellow center .....	1.50	.75	.75	
Surugu (Mil) Pure red, new .....	1.50	.75		
Taiho—Pink .....	1.00	.50	.50	
Tamate Boku—Old rose pink with yellow ...	7.50	5.00		
Tokio—Clear pink, one of the best .....	1.50	.75	.75	
Toro-No-Maki—White, very good .....	3.50	1.75	1.75	
Torpilleur (Des) Carmine purple .....	1.50	.75	.75	
Weigetsuka—Large pink .....	1.50	.75	.75	
Westerner—Rose-pink, largest size .....	10.00	7.50		
White Japan—White .....	1.00	.50	.50	
Yamato Tsukasa—Bright rose .....	1.00	.50	.50	
Yellow King—Center is yellow; petals soft pink; best yellow .....	5.00	3.50		
Yeso—White tinted yellow .....	1.00	.50	.50	

## SINGLE PEONIES

	Retail Price	Wholesale Prices		
		1	5-10	25 or More
Albiflora—White guards .....	1.00	.60	.55	.50
Black Prince (Thur) Dark garnet .....	1.50	1.00	.75	
Charlotte Core (Dor) Large pure white .....	2.50	1.00	1.00	
Clio (Pet) Pink, good .....	1.00	.50	.50	
Cottage Maid (Pleas) Light pink .....	1.00	.50	.50	
Edith West (Bra) White .....	1.50	.75	.60	
Eglantine (Des) Pink fancy white .....	1.00	.50	.50	
Flanders Field (Bra) Red, brilliant color ...	3.00	1.50	1.50	
Harriet Olney (Bra) Soft rose color .....	1.00	.50	.50	
Helen (Thur) Shell pink, tall & erect .....	3.00	1.50	1.25	
Imperial Red (Sass) Pink, erect grower .....	2.00	1.00	1.00	
Jeanne Ernoult (Dor) Tall pink .....	1.50	.75	.60	.50
Kankakee (Aut) Fine red, very new .....	3.00	2.00		
Kelway's Wild Rose (Kel) Speck. pink .....	1.50	.75	.75	
Kewanee (Aut) Rich early dark red .....	1.50	.85		
Kickapoo (Aut) Late dark red, fine .....	2.00	1.25		
King Albert (Kel) Rosy violet .....	1.00	.50	.50	.40
Krinkled White (Bra) White, krinkled edges	3.00	2.25		
La Fiancee—White, good .....	1.00	.60	.55	.50
Le Jour (Shay) White, extra fine .....	1.50	.75	.65	.60
L'Etincelante (Des) Carmine shaded .....	1.25	.75	.65	.60
Letitia (Kel) Clear pink .....	1.00	.50	.40	
Louise Delettre (Dor) Light pink .....	1.00	.50	.45	.40
Madeleine Gauthier (Des) Shell pink .....	1.50	.75	.75	
Mafeking (Kel) Dark rose pink .....	1.00	.50	.50	
Margaret Dessert (Des) White, splashed ...	1.00	.50	.50	
Maurice Maeterlinck (Kel) Pink-crim. ....	1.00	.50	.45	.40
May Oleson (Ole) Pink apple blossom .....	1.00	.65	.50	
Minnehaha (Pleas) Cherry red, early .....	1.00	.65	.65	
Mischief (Aut) Good, soft pink .....	1.50	.75	.60	
Moonbeam—Opal tints, unusual .....	1.50	.75	.75	
Nellie (Kel) Pink blush, very fine .....	1.00	.50	.50	
Perle Blanche (Des) Pure white .....	1.25	.75	.60	
Pocohontas (Pleas) Rosy red, late, tall .....	1.00	.50	.45	.40
Pres. Lincoln (Brand) Red, midseason .....	5.00	2.50	2.50	
Pride of Langport (Kel) Peach pink .....	1.50	.75	.75	.60
Princess Matilda (Des) China pink .....	1.00	.50	.45	.40

	Retail Price	Wholesale Prices		
		1	5-10	25 or More
Pure Love (Kel) Shell pink .....	1.00	.50	.50	
Queen (Pleas) White .....	1.00	.50	.50	
Rebecca Wright (Wri) Large fine white .....	2.50	1.50		
Sea Shell—Light pink, distinct .....	3.00	2.00	1.75	
Silvia Saunders—Semi-double; shell pink .....	2.50	1.50	1.50	1.25
Spring Maid—Light pink .....	1.00	.50	.50	
Toreador (Wet) Red, late, very tall .....	1.00	.50	.50	
Veloutine (Des) Tyrian purple .....	1.00	.50	.45	.40
Venise (Des) Brilliant pink .....	1.00	.50	.50	
Vera (Gumm) Dark red, popular .....	2.00	1.00	1.00	
Verdun (Dor) Red, rich quality .....	2.00	1.00	1.00	
Vesuve (Des) Dark red, dwarf .....	1.00	.50	.50	
Whitley Major—White .....	1.00	.50	.50	
Wilbur Wright (Kel) Rich maroon .....	1.00	.60	.50	

PEONY SPECIES

Anomala—Cut leaves, rose lilac .....	1.00	.75	.75	
Ligulata Rosea—Soft pink .....	1.50	.85	.75	
Lobata—Brilliant cerise, unusual .....	10.00	6.50		
Officinalis Alba Plena—Early white double ..	2.00	1.00	.100	
Officinalis Rosea Plena—Bright pink double	1.50	1.00	1.00	
Officinalis Rubra Plena—Rich red .....	1.50	.75	.75	
Tenuifolia Flora Plena—red double .....	2.50	1.50	1.50	
Tenuifolia Latifolia—Crimson, single .....	1.50	.75	.75	

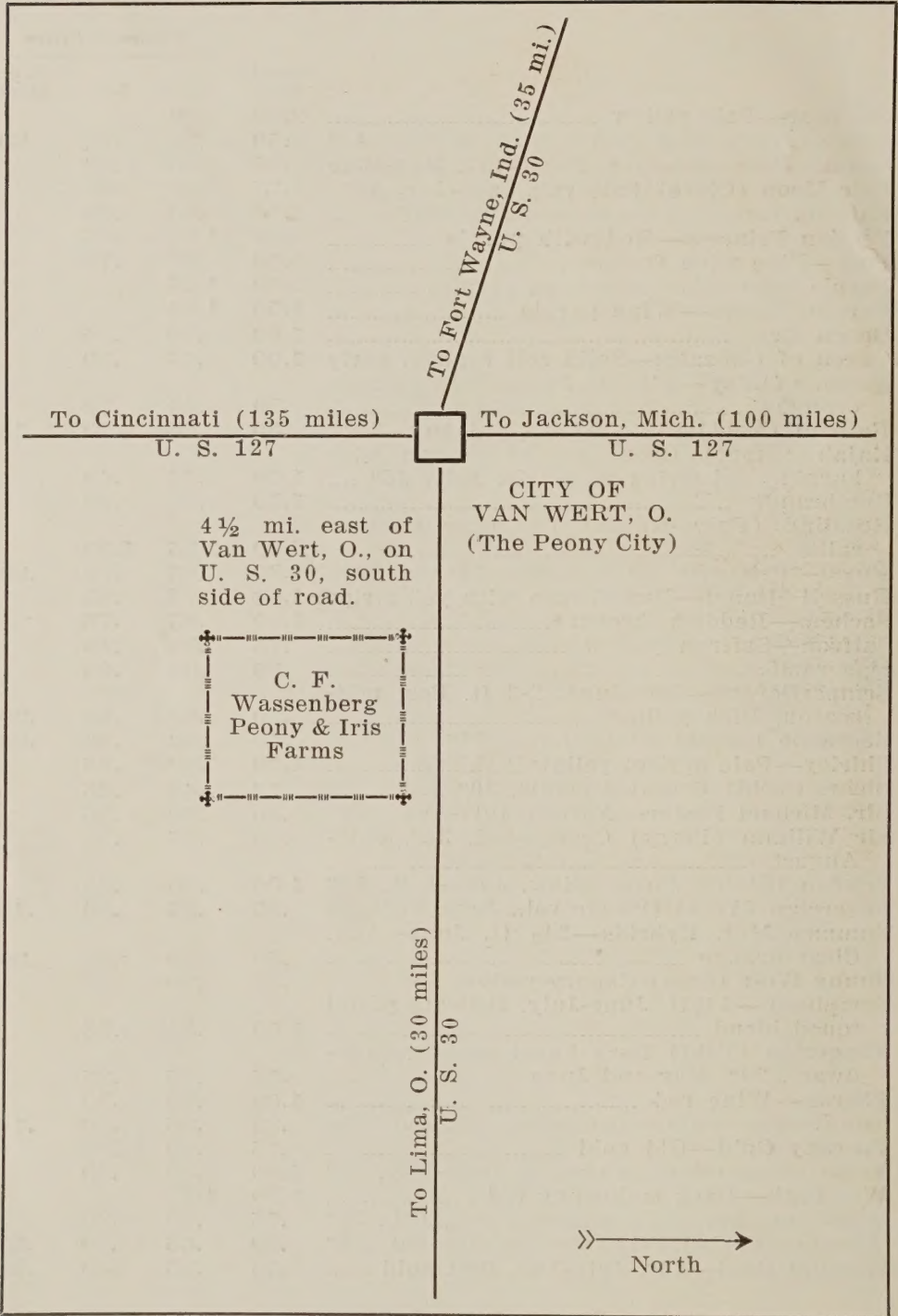
HEMEROCALLIS

They are perfectly hardy. Will thrive in sun or partial shade. Beautiful for mass color effect in the garden or as a cut flower. Bloom from May to August. No modern garden should be without a collection.

	Retail Price	Wholesale Prices		
		1	5-10	25 or More
Acres of Gold (Russell) .....	1.00	.65	.50	
Amaryllis (Bet) 36". Golden orange, July....	.50	.35	.30	
Anna Betscher (Bet) 36". Deep orange .....	.50	.35	.30	
Apricot (Yeld) 2 1/2 ft., light orange, early ...	.35	.25	.20	.12
Apricot Glow—Apricot and gold .....	.75	.40	.35	.30
Aureole—3 ft.; orange yellow .....	.35	.25	.20	.12
August Pioneer (Sto) 34" Chrome yellow ...	.75	.40	.35	.30
Autumn Prince—Clear light yellow .....	2.50	1.25	1.00	
Baby Tears—Rosy red ruffled petals .....	1.00	.65	.55	
Bagdad (Stout) Combination of color. 42" June-July .....	.50	.30	.25	.20
Bay State (Bet) Large yellow, 46" .....	.50	.30	.25	
Bijou (Stout) Orange, 24", June-July .....	.50	.35	.25	.20
Boutonniere (Sto) Light peach, 36", Jul-Aug.	.50	.35	.30	.25
Buckeye—Full, clear orange with large ma- hogany red eye. 3 ft. June .....	1.00	.65	.50	.40
Caballero—Bicolor; yellow sepals .....	1.00	.50	.40	.35
Canoso (Bur) 3 1/2 ft., Canary yellow .....	.35	.25	.20	.15
Campus Queen (Russell) New yellow .....	1.00	.50	.35	
Chengtu—3 ft., July-Aug., recurved petals....	.75	.40	.35	
Cinnabar (Sto) Brownish red; Jul-Aug., 30"	.50	.35	.25	.20
Circe (Stout) Clear yellow, 48", July .....	1.00	.50	.40	
Cissy Giuseppe (Perry) Deep rosy bronze, July, 36" .....	.50	.25	.20	.15
Citrina—Sulphur yellow, June-July, 36" .....	.35	.25	.20	.15
Craemore Henna—Brilliant henna .....	1.00	.65		
Cressida (Bet) Bright orange, 36", June-Aug.	.50	.30	.25	.15
Crown of Gold (Nes) Deep or., June-July, 3'	1.00	.50	.35	
Dauntless—36" July-Aug., pale yellowish or- ange .....	.75	.40	.30	

	Retail Price	Wholesale Prices		
		1	5-10	25 or More
D. D. Wyman (Bet) Golden yel., July-Aug, 3'	.35	.25	.20	
<b>Dominion</b> —Reddish brown; medium .....	1.50	1.00	.75	
Doris Dae (McDade) .....	.50	.30	.25	
Dr. Regel—Orange-yel., May-June; 30", frag.	.35	.25	.20	.15
Dumortieri—Cadmium yellow, May-June, 24"	.35	.25	.20	.15
Earliana (Bet) Very early .....	1.00	.50	.45	
<b>Elizabeth Pike</b> (Perry) Orange, brown and yellow, 18", midseason to late .....	.75	.35	.30	
<b>Emily Hume</b> —Deep yellow, twisted and fluted. 42", July-August .....	1.00	.65	.55	
<b>Evangeline</b> —Beautiful and unusual .....	2.00	1.00		
<b>Fairy Queen</b> .....	1.00	.65	.50	
<b>Festival</b> —Orange with reddish brown lines ..	1.50	.75	.60	
Flava—The old lemon lily .....	.35	.25	.25	
Fulva—The old roadside lily; July. 40" .....	.35	.25	.20	.10
<b>Fulva Rosea</b> —The pink hemerocallis .....	2.00	1.25	1.00	
<b>Fulvolo</b> (Bet.) Dark fulvous. Very late. 30"	1.00	.50	.40	
<b>Gaiety</b> (Bet.) June-July. 52". Pale yellow ..	1.50	.75		
George Yeld (Perry) Gold. yel., Jul-Aug., 36"	.50	.35	.25	.20
<b>Georgia</b> —Buff and pink .....	2.00	1.50		
<b>Gladness</b> .....	1.00	.50	.40	
Gloriana (Bet) Golden yellow, June-July ....	.75	.35	.30	
Gold Dast—Empire yel., dwarf, 24", May-Jun.	.35	.25	.20	.15
Goldeni (Bet) Deep orange; June-July, 3 ft.	.35	.25	.20	.15
<b>Golden Queen</b> —Yellowish orange .....	1.00	.50	.35	
Gold Standard—Rich can. yel., Jul-Aug., 36"	.35	.25	.20	.15
Gypsy (Bet) Deep orange, June-July, 36" ....	.35	.25	.20	.15
<b>Hankow</b> (Sto) Yellow-Orange, July-Aug. ....	1.00	.65	.50	
Harvest Moon (Bet) Or. sherb., Jul-Aug., 36"	.50	.35	.25	.20
High Boy (Gray) Pale yel., 5 ft., Jul-Aug. ....	.50	.35	.30	.25
<b>Hyperion</b> (Mead) The best, waxy yellow, July and August, 48" .....	.75	.35	.30	.30
<b>Imperator</b> (Perry) Star shaped .....	.35	.25	.20	.15
<b>Iris Perry</b> —Orange bronze .....	.75	.35	.30	
J. A. Crawford (Bet) Apr. yel., Jul-Aug. 4ft.	.35	.25	.20	.15
J. R. Mann (Bet) Buff yel., June-Aug., 42"....	.50	.25	.20	.15
<b>Keepsake</b> —Golden yellow .....	1.00	.50	.40	
Kwanso Flora Plena—Orange; double flowers, 42", July and August flowering .....	.35	.25	.20	
Kwanso Flo. Var.—Double, striped leaves ....	.50	.25	.20	
Lemona (Bet) Lemon-yellow, July-Aug., 42"	.35	.25	.20	.15
<b>Lemon Lily</b> (Flava) Old but still good; 36" ..	.35	.25	.25	
Linda (Stout) Golden yel., June-July, 30" ....	.75	.35	.30	
<b>Lucky Star</b> (Way.) 39" Brilliant lemon chrome. June-July. ....	1.00	.50	.40	
Luteola Major—Orange yellow, Aug., 36" ....	.35	.25	.20	.15
<b>Majestic</b> —Orange; large .....	2.50	1.50	1.25	
Marvel .....	1.00	.50	.35	.30
<b>Mary Alice Fuller</b> —Soft canary yellow .....	.75	.40	.30	.25
Mary Florence (Betsch) Waxy-apricot buff, June-July, 3 ft. ....	.50	.35	.30	.25
Margaret Perry (Per) Brilliant or., Jul-Aug.	.35	.25	.20	.15
Mandarin (Farr) Lemon yellow, Aug., 48"....	.50	.35	.30	
Midas (Stout) Golden orange, June-July, 42"	.50	.30	.25	
Middendorffii—Rich or. yel., May-June, 18" ..	.35	.25	.20	
Mikado (Stout) Or., very good, Jun-Jul., 36"	.35	.25	.20	.12
Modesty (Bet) Pale yellow, 36", July .....	.50	.35	.30	.25
<b>Monarch</b> —3 ft. July. Light cadmium yellow with delicate halo of fouvous orange .....	.50	.35	.30	.25
<b>Mrs. A. H. Austin</b> (Bct) Deep yel., July 38" ..	.50	.35	.25	.20
<b>Mrs. Chas. Urshul</b> —Primrose yellow; 38" ....	1.00	.50	.35	
<b>Mrs. W. H. Wyman</b> (Bet) Lemon-yel., July-Aug., 4 ft. ....	.35	.25	.20	
<b>No Siesta</b> —Early, good orange .....	1.00	.50	.35	
<b>Old Vintage</b> —Wine with yellow throat .....	1.50	.75		

	Retail Price	Wholesale Prices		
		1	5-10	25 or More
On Tour—Pale yellow .....	2.50	1.50		
Ophir (Farr) Dark golden yel., Jul-Aug., 48" .....	.50	.35	.25	.20
Orange Man—Medium yel. dwarf, May-June .....	.35	.25	.20	
Pale Moon (Cleve) Pale yel., June-July 30" .....	.75	.40	.35	
Patricia (Stout) Pale yellow, July, 36" .....	.75	.50	.40	
Persian Princess—Red with purple .....	2.00	1.00	.85	
Port—Fine wine flowers .....	1.50	.85	.75	
Purple Sage—Darkest of red purples .....	2.00	1.25		
Purple Waters—Wine purple .....	1.50	1.00		
Queen Bess .....	1.00	.50	.35	
Queen of Gonzalez—Solid self orange, early .....	1.00	.65	.50	
Queen of May—2½ ft. June. Pale apricot-orange .....	.50	.35	.30	
Radiant (Yeld) Clear orange, Jul-Aug., 36" .....	.50	.25	.20	.15
Rajah (Stout) Open, scarlet orange with burning red stripe on petals. July, 36" .....	1.00	.50	.40	
Rembrandt .....	1.50	.65	.50	
Rosalind (Fulva-Rosea) The pink Hemerocallis .....	2.00	1.25	1.00	
Royal—Primrose yellow, July, 36" .....	.50	.35	.30	.20
Russell Minuet—Dwarf, rose with yel. stripe .....	1.50	.75	.65	
Sachem—Reddish brown .....	1.00	.85	.75	
Saffron—Saffron yellow .....	.75	.50	.40	
Semeramis .....	.50	.35	.25	
Semperflorens—May-June. 2-3 ft. Best mid-season. Rich yellow .....	.50	.30	.25	.20
Serenade (Stout) Pinkish red, 36" .....	.75	.40	.30	.25
Shirley—Pale apricot yellow .....	1.00	.50	.35	
Sirius (Yeld) Crinkled petals, 30" .....	.75	.40	.35	
Sir. Michael Foster—Apricot July-Aug., 48" .....	.50	.30	.25	
Sir William (Perry) Orange-red. 36", July-August .....	.50	.35	.25	
Soudan (Stout) Pure yellow, June-July, 54" .....	1.00	.50	.45	
Sovereign (Yeld) Orange yel., June, 30" .....	.35	.25	.20	.15
Summer Mut. Hybrids—2½ ft. June-Aug. Clear orange .....	.50	.30	.25	.20
Sunny West (Sass) Canary yellow, 48" .....	.50	.30	.25	
Symphony—3½ ft. June-July. Delicate pastel toned blend .....	1.50	.85	.75	
Tangerine (Yeld) Dark burnt orange. Semi-dwarf. 20", May and June .....	.75	.35	.25	
Theron—Wine red .....	1.00	.65	.50	
Thunbergii—Pale yel. evening. bl., Jul-Aug. .....	.35	.25	.20	.15
Tuscany Gold—Old gold .....	.75	.40	.35	
Vesta (Stout) Golden orange, June-July, 30" .....	1.00	.50	.40	
War Path—Dark mahogany red .....	1.50	1.15		
Wau-Bun (Sto) Soft cadmium yel., Jul., 30" .....	.75	.40	.30	
Winsome (Yeld) Yel. very fine, Jun-Jul., 36" .....	.50	.35	.30	.25
Woodlot Gold—36". July-Aug. Soft gold .....	.50	.35	.30	.25



VISIT US DURING BLOOMING TIME

Familiarize Yourself with the Most Popular Varieties